



FITTING INSTRUCTIONS FOR CP0370BL AERO CRASH PROTECTORS
HONDA VFR 800 2014-



PICTURE 'A'



PICTURE 'B'



REAR OF BIKE

FRONT OF BIKE

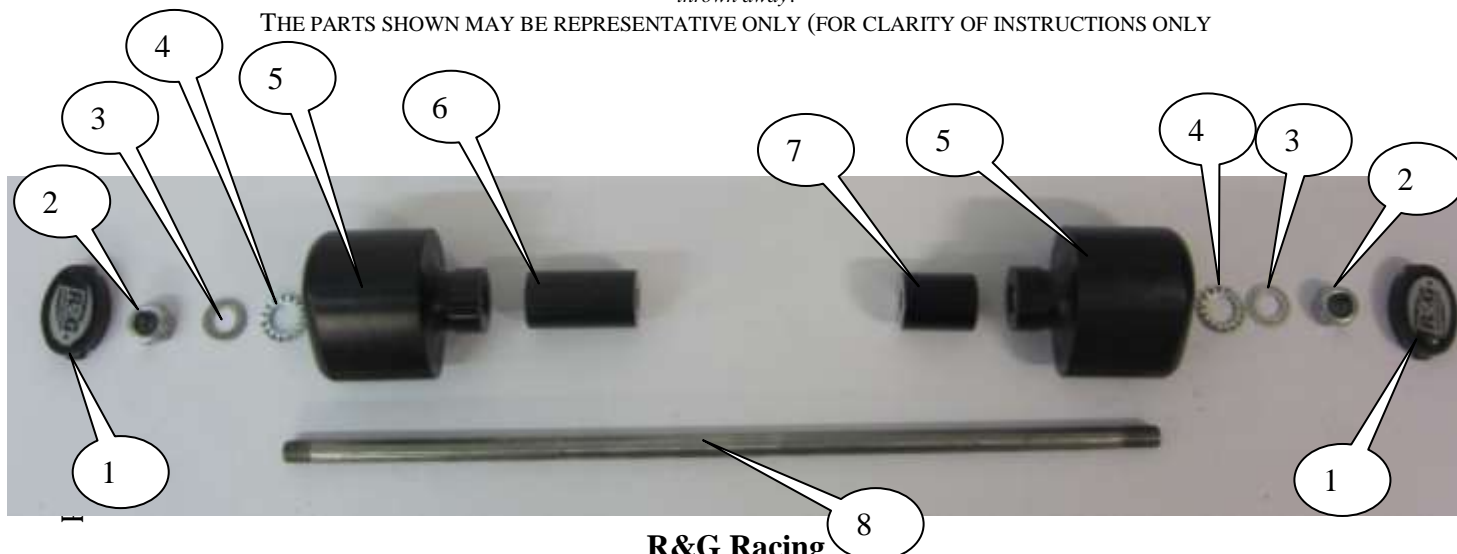
PICTURE 'C'

THIS KIT CONTAINS THE ITEMS PICTURED AND LABELLED BELOW.
DO NOT PROCEED UNTIL YOU ARE SURE ALL PARTS ARE PRESENT.

Please note that the way the kit is packed does not necessarily represent the way of mounting to the bike

Please note that in cases where kits are packed with rubber washers holding the components onto the bolt – *the rubber washers should be thrown away!*

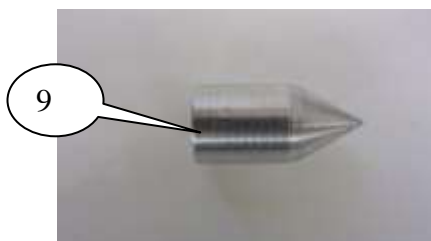
THE PARTS SHOWN MAY BE REPRESENTATIVE ONLY (FOR CLARITY OF INSTRUCTIONS ONLY)



R&G Racing

Unit 1 Shelleys Lane, East Worldham, Alton, Hants GU34 3AQ

Tel: +44 (0)1420 89007 Fax: +44 (0)1420 87301 www.rg-racing.com Email: info@rg-racing.com

LEFT HAND SIDERIGHT HAND SIDEMARKING TOOLTOOLS REQUIRED

- Socket set to include 14, 17 and 19mm(x2) A/F sockets and wrenches.
 - 5mm Allen key.
 - Drill
- 28mm Hole saw and/or Dremel type tool.
 - Torque wrench (up to 40Nm).

LEGEND

ITEM 1 = BC0002 CRASH PROTECTOR CAPS (x2).

ITEM 2 = M12x1.25 NYLOC NUTS (x2).

ITEM 3 = M12 PLAIN WASHERS (ENGINE BAR WASHERS) (x2).

ITEM 4 = LW0001 (M12 LOCKING WASHERS) (x2).

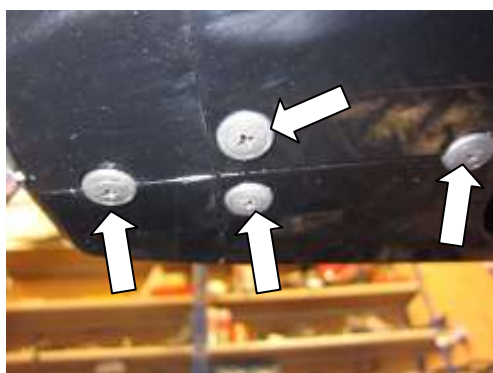
ITEM 5 = B0431 with CS0340 (12mm) (BOTH CRASH PROTECTORS) (x2).

ITEM 6 = S0805 LEFT HAND SIDE SPACER (56mm LONG) (x1).

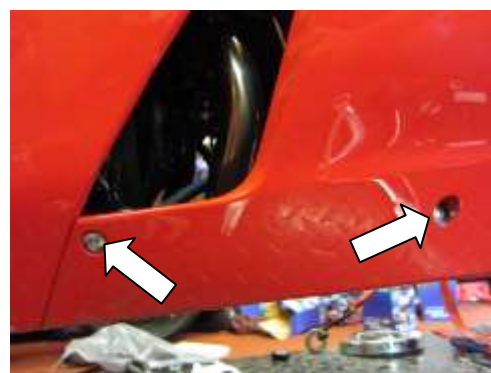
ITEM 7 = S0806 RIGHT HAND SIDE SPACER (54mm LONG) (x1).

ITEM 8 = EB005 ENGINE BAR (12mm x 560mm LONG) (x1).

ITEM 9 = T0023 FAIRING MARKING TOOL (x1).



PICTURE 1



PICTURE 2

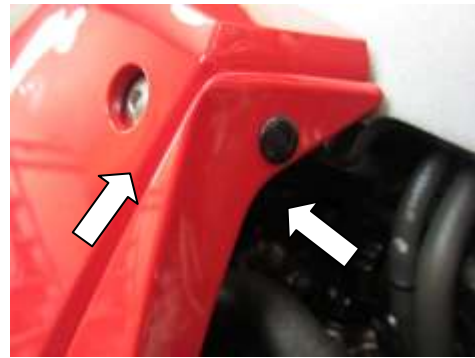
R&G Racing

Unit 1 Shelleys Lane, East Worldham, Alton, Hants GU34 3AQ

Tel: +44 (0)1420 89007 Fax: +44 (0)1420 87301 www.rg-racing.com Email: info@rg-racing.com



PICTURE 3



PICTURE 4



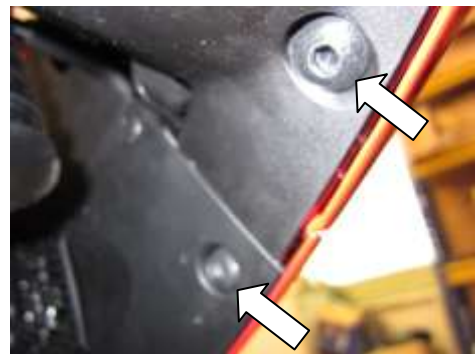
PICTURE 5



PICTURE 6



PICTURE 7



PICTURE 8



PICTURE 9



PICTURE 10

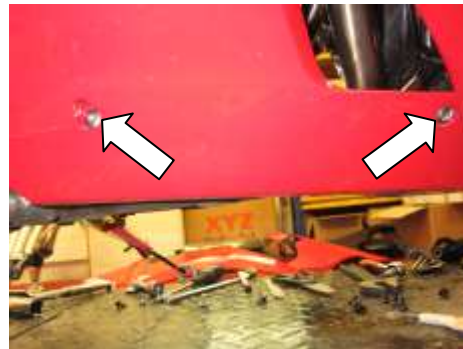
R&G Racing

Unit 1 Shelleys Lane, East Worldham, Alton, Hants GU34 3AQ

Tel: +44 (0)1420 89007 Fax: +44 (0)1420 87301 www.rg-racing.com Email: info@rg-racing.com



PICTURE 11



PICTURE 12



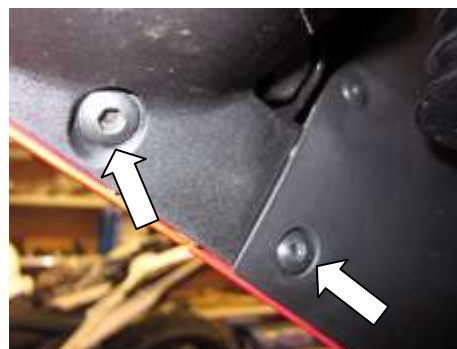
PICTURE 13



PICTURE 14



PICTURE 15



PICTURE 16



PICTURE 17



PICTURE 18

R&G Racing

Unit 1 Shelleys Lane, East Worldham, Alton, Hants GU34 3AQ

Tel: +44 (0)1420 89007 Fax: +44 (0)1420 87301 www.rg-racing.com Email: info@rg-racing.com



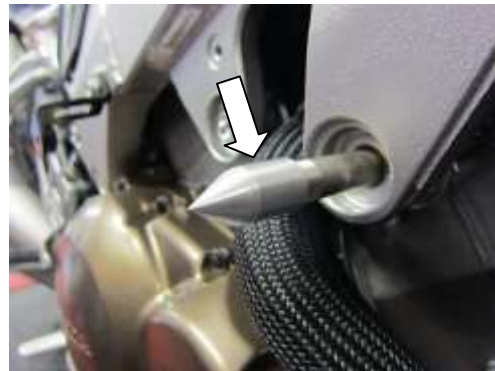
PICTURE 19



PICTURE 20



PICTURE 21



PICTURE 22



PICTURE 23



PICTURE 24

FITTING INSTRUCTIONS

Near side (left side as you sit on bike)

- Remove the four plastic rivets arrowed in picture 1.
- Remove the four fairing bolts and the plastic push rivet arrowed in pictures 2, 3 and 4.

R&G Racing

Unit 1 Shelleys Lane, East Worldham, Alton, Hants GU34 3AQ

Tel: +44 (0)1420 89007 Fax: +44 (0)1420 87301 www.rg-racing.com Email: info@rg-racing.com