



**FITTING INSTRUCTIONS FOR LP0389BK**  
**LICENCE PLATE BRACKET**



**This kit contains the items pictured and labelled over page.  
Some parts may be shown for clarity of instructions only.  
Do not proceed until you are sure all parts are present.  
Please read all instructions before proceeding.**

**IF IN ANY DOUBT WHEN FITTING OUR PRODUCTS, CONSULT ONE OF OUR DEALERS  
OR HAVE FITTED BY A QUALIFIED TECHNICIAN.**

Please note that the way the kit is packed does not necessarily represent the way of mounting to the bike.

In the event of rubber washers being used to hold components onto bolts, these rubber washers can be thrown away.



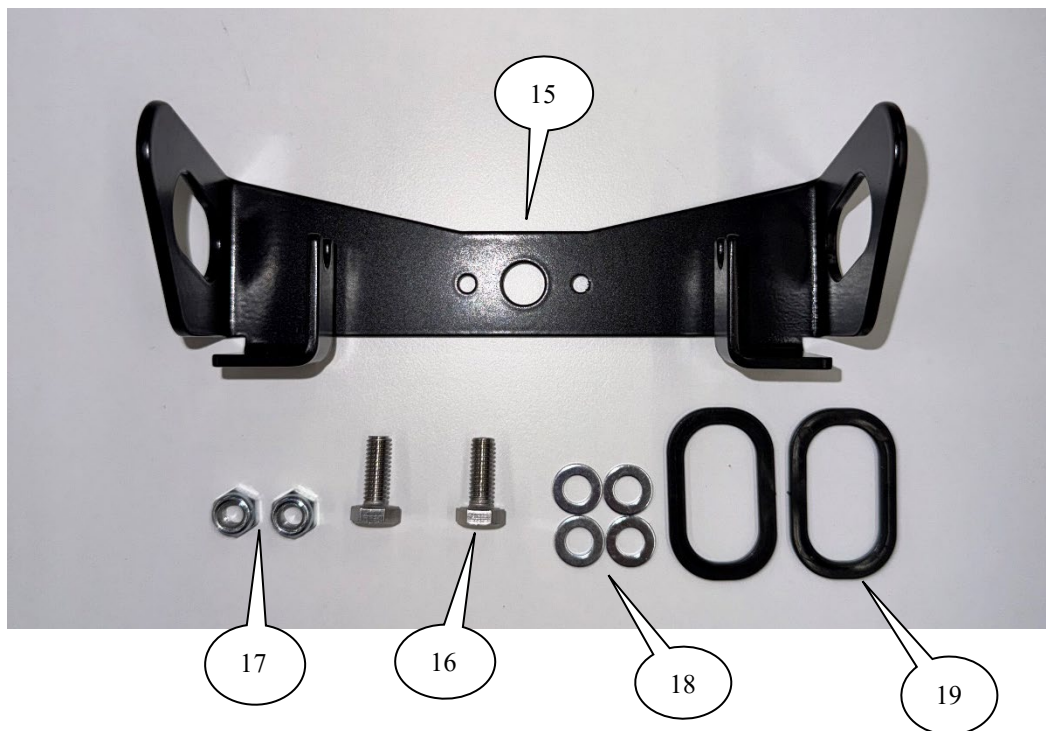
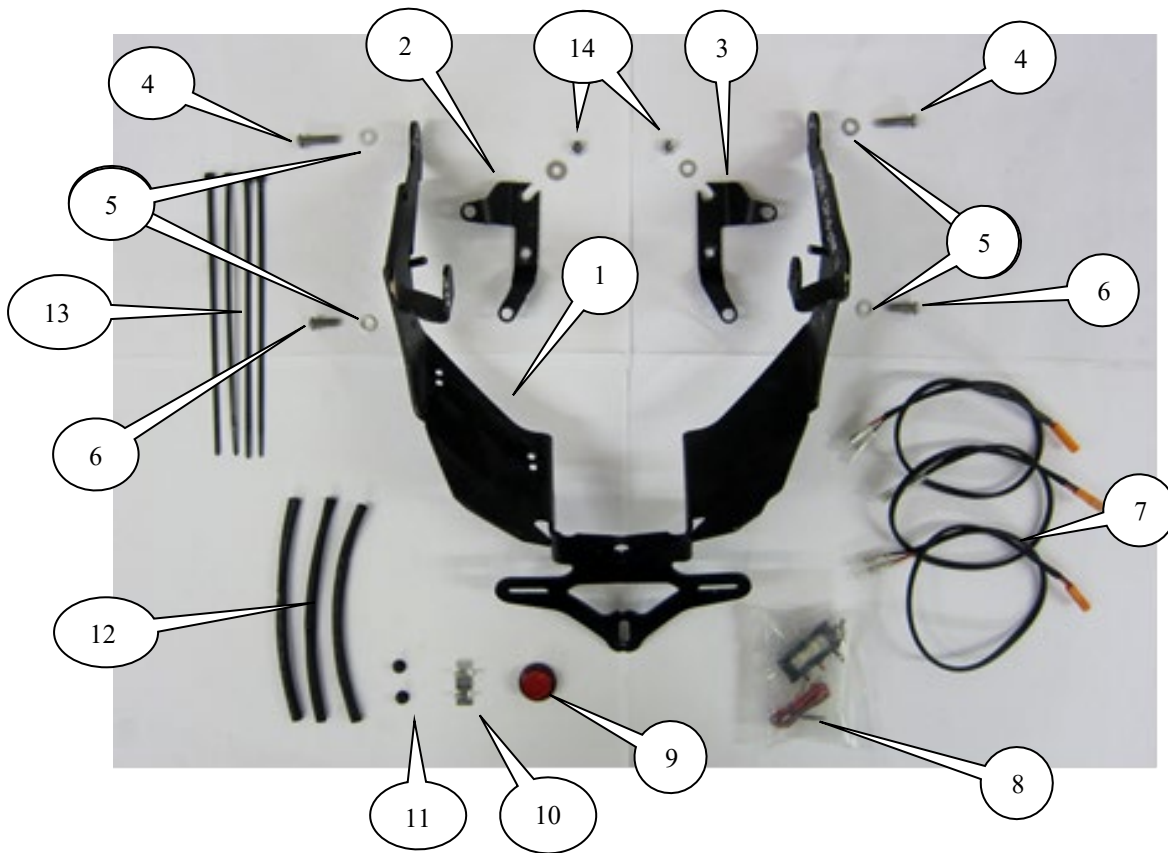
<b><u>TOOLS REQUIRED</u></b>	<b><u>GENERAL TORQUE SETTINGS</u></b>
<ul style="list-style-type: none"> <li>• Set of metric Allen keys to include 4 &amp; 5mm A/F sizes.</li> <li>• Socket set to include 6, 10 &amp; 12mm sockets and wrench.</li> <li>• 12mm open-ended spanner.               <ul style="list-style-type: none"> <li>• Phillips screwdriver.</li> </ul> </li> <li>• Small amount of superglue.               <ul style="list-style-type: none"> <li>• Cable cutters.</li> </ul> </li> </ul>	<p>M4 BOLT = 8Nm</p> <p>M5 BOLT = 12Nm</p> <p>M6 BOLT = 15Nm</p> <p>M8 BOLT = 20Nm</p> <p>M10 BOLT = 40Nm</p> <p>M12 BOLT = 40Nm</p>

### **LEGEND**

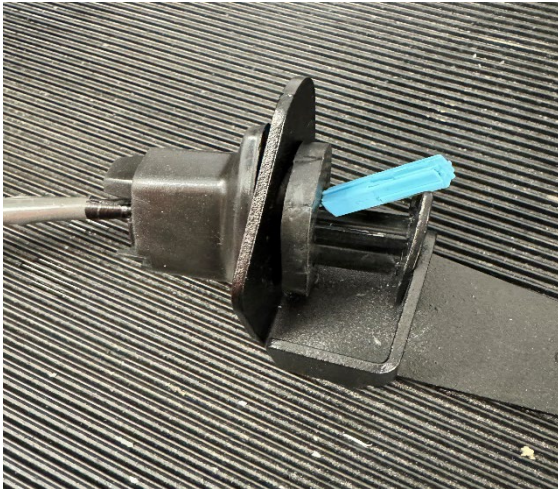
<b>ITEM No.</b>	<b>DESCRIPTION</b>	<b>QTY</b>
ITEM 1	LICENCE PLATE BRACKET (TB0139 Part 1)	1
ITEM 2	LICENCE PLATE LEFT SIDE BRACKET (TB0139 Part 2)	1
ITEM 3	LICENCE PLATE RIGHT SIDE BRACKET (TB0139 Part 3)	1
ITEM 4	M6 x 25mm LONG BUTTON HEAD BOLT	2
ITEM 5	M6 WASHER	6
ITEM 6	M6 x 16mm LONG BUTTON HEAD BOLT	2
ITEM 7	CON0009 INDICATOR & No PLATE LIGHT CONNECTORS	3
ITEM 8	LA0002 No. PLATE LIGHT ASSEMBLY	1
ITEM 9	REFLECTOR	1
ITEM 10	SELF ADHESIVE CABLE CLIPS	2
ITEM 11	RUBBER BUNGS	2
ITEM 12	150mm LENGTH OF HEATSHRINK	3
ITEM 13	2.5mm CABLE TIES	4
ITEM 14	M6 NYLOC NUTS	2
ITEM 15	TB0389 INDICATOR ADAPTOR	1
ITEM 16	M6 x 1.00 x 16mm HEX HEAD BOLT	4
ITEM 17	M6 NYLOC NUTS	2
ITEM 18	M6 x 12mm WASHER	4
ITEM 19	I0032 INDICATOR SPACER	2



**EXPLODED DIAGRAMS**



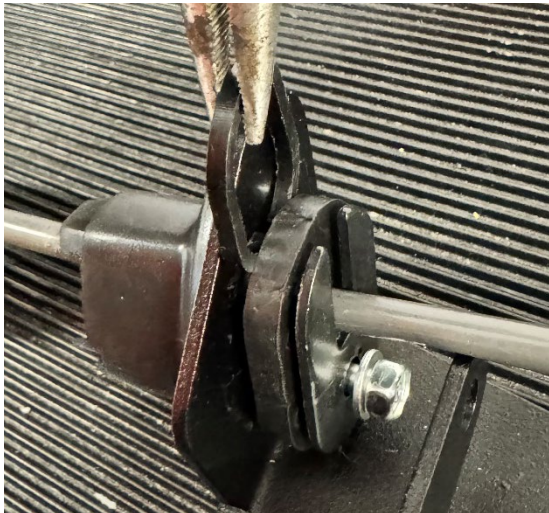




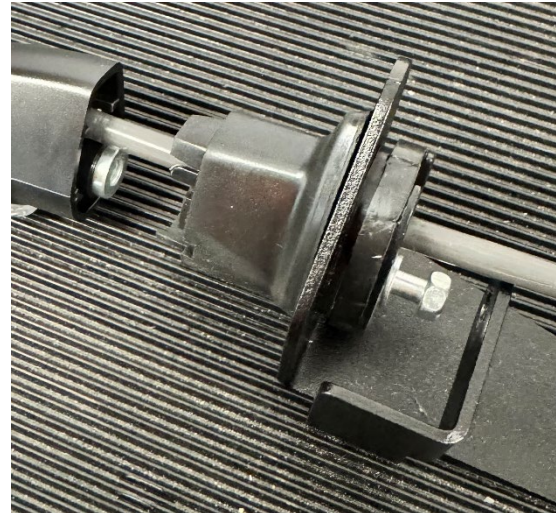
PICTURE 1



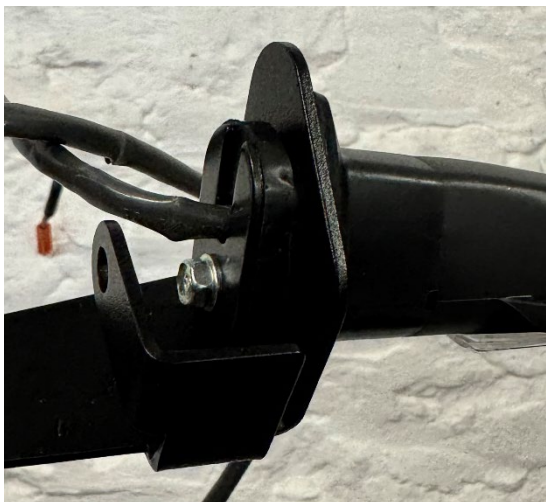
PICTURE 2



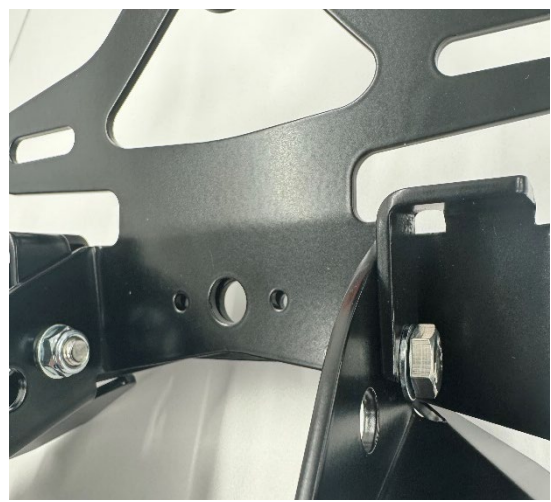
PICTURE 3



PICTURE 4



PICTURE 5



PICTURE 6





PICTURE 7



PICTURE 8



PICTURE 9



PICTURE 10



PICTURE 11



PICTURE 12



PICTURE 13



PICTURE 14



PICTURE 15



PICTURE 16





### **REMOVE / LOOSEN / DISCONNECT BEFORE FITTING**

- BOTH SEATS (REMOVE) **RE-INSTAL AFTER FITING R&G TAIL TIDY**
- SIDE PLASTICS (LOOSEN) **RE-INSTAL AFTER FITING R&G TAIL TIDY**
- REAR SUB FRAME PLASTIC (REMOVE) **RE-INSTAL AFTER FITING R&G TAIL TIDY**
- OEM NUMBER PLATE BRACKET (REMOVE) **NOT TO BE USED AGAIN**
- INDICATOR CONNECTORS (DISCONNECT) **RE-INSTAL AFTER FITING R&G TAIL TIDY**
- NUMBER PLATE (REMOVE) **RE-USE ON R&G TAIL TIDY**
- EXHAUST SHEILD (REMOVE) **RE-USE ON R&G TAIL TIDY**
- EXHAUST PLASTIC COVERS (REMOVE) **RE-USE ON R&G TAIL TIDY**
- INDICATORS (REMOVE) **REMEMBER THE OEM ORIENTATION. RE-USE ON R&G TAIL TIDY**

### **FITTING INSTRUCTIONS**

Once the pre fitting list is completed, fitting the R&G tail tidy can begin.

1. Start by fitting the indicators into the correct side of the Indicator Bracket (**ITEM 15**), follow the order of pictures to assist the correct fitment.
  - PICTURE 1 instal OEM rubber spacer, slot metal bracket and wire through.
  - PICTURE 2 pull wire through and push metal spacer in through.
  - PICTURE 3 install R&G Indicator spacer (**ITEM 19**) cut to assist.
  - PICTURE 4 push indicator on and tighten bolt.
  - PICTURE 5 repeat for other side.
2. Once the indicators are fitted. You need to place the hex head bolts (**ITEM 16**), washers (**ITEM 18**) and nyloc nuts (**ITEM 18**) through the licence plate bracket (**ITEM 1**) and slot the indicator bracket (**ITEM 15**) onto the bolts as shown in PICTURE 6 and tighten.
3. Once slotted into position, the plate light assembly (**ITEM 8**) can be placed through the front of the tail tidy unit as shown in PICTURE 7 and tighten.  
**(ENSURE LIGHT CABLES ARE PROTECTED WITH THE SUPPLIED HEAT SHRINK, USE A HEAT GUN TO APPLY).**



4. Connect the two OEM plastic exhaust shields using the OEM screws to the licence plate left and right side brackets (**ITEM 2/ ITEM 3**) as shown in PICTURE 8-9.
5. Mount the now assembled OEM plastic exhaust shields to the tail tidy using two washers (**ITEM 5**) and two nyloc nuts (**ITEM 14**) as shown in PICTURE 10 (**DO NOT FULLY TIGHTEN YET**).
6. Once mounted, connect the OEM exhaust shield on both sides by slotting it into place and shown in PICTURE 11.
7. Now the tail tidy is fully assembled. Next is some cable management, use PICTURE 11 / 12 to see how it should be correctly cable tied using (**ITEM 13 / 10**)
8. The next step is to mount the assembly onto the bike. Slide the assembly into position ensuring all mounting holes and exhaust heat shield OEM bolts line up. Use the bolts and washers as shown in the EXPLODED PARTS PICTURE bolts (**ITEM 4 / 6**) and washers (**ITEM 5**), use PICTURES 13 / 14 to assist and then tighten using the Torque setting on page 2.
9. Now the tail tidy is mounted securely it is time to connect the indicators/ number plate light wires. Firstly connect the number plate light connector (**ITEM 7**), **BLACK MALE BULLET CONNECTOR INTO RED FEMALE BULLET CONNECTOR AND RED MALE BULLET CONNECTOR INTO BLACK FEMALE BULLET CONNECTOR**. Then connect the orange plug end of (**ITEM 7**) into the OEM white number plate light connector as shown in PICTURE 15. Now reconnect the indicator plugs into the correct colour matching connectors as shown in PICTURE 16. Check all lights and indicators are working.





Now the R&G Tail Tidy is fitted, it is time to reinstall all OEM components that were removed at the start of the process. Remember to refer to the at the start of the instruction on Page 7 (**REMOVE/ LOOSEN / DISCONNECT BEFORE FITTING**).

**IMPORTANT: FOR SAFETY, ENSURE THE LICENCE PLATE IS PLACED AS HIGH AS POSSIBLE ON THE TAIL TIDY (IT MAY REQUIRE DRILLING). IF FITTING A LICENCE PLATE OF 200MM OR LONGER (INCLUDING ANY SHROUD OR REFLECTOR ATTACHMENT) TO THE BRACKET, BEFORE RIDING, FULLY COMPRESS THE SUSPENSION TO ENSURE NO PART OF THE ASSEMBLY CAN CONTACT THE TYRE WHILE THE VEHICLE IS IN MOTION OR UNDER LOAD. IT IS YOUR RESPONSIBILITY TO CHECK FOR THIS POSSIBILITY AND TAKE AVOIDING ACTION. FAILURE TO CHECK THIS COULD RESULT IN SERIOUS INJURY OR DAMAGE TO THE MOTORCYCLE.**

ISSUE 1 – 18/12/2024 (JH)

#### CONSUMER NOTICE

The catalogue description and any exhibition of samples are only broad indications of the Products and R&G may make design changes which do not diminish their performance or visual appeal and supplying them in such state shall conform to the order. The Buyer acknowledges no representation or warranty (other than as to title) has been given or will apply to the Products other than those in R&G's order or confirmation and the Buyer confirms it has chosen the Products as being of merchantable quality and suitable for its particular purposes. Where R&G fits the Products or undertakes other services it shall exercise reasonable skill and care and rectify any fault free of charge unless the workmanship has been disturbed. The Buyer is responsible for ensuring that the warranty on the motorcycle is not affected by the fitting of the Products. On return of any defective Products R&G shall at its option either supply a replacement or refund the purchase money but shall not be liable if the Products have been modified or used or maintained otherwise than in accordance with R&G's or manufacturer's instructions and good engineering practice or if the defect arises from accident or neglect. Other than identified above and subject to R&G not limiting its liability for causing death and personal injury, it shall not be liable for indirect or consequential loss and otherwise its liability shall be limited to the amounts paid by the Buyer for the Products or the fitting or service concerned. These terms do not affect the Buyer's statutory rights.

#### R&G RACING RETURNS POLICY (NON-FAULTY GOODS)

Returns must be pre-authorized (if not pre-authorized the return will be rejected). Goods may only be returned direct to us if they were purchased direct from us (customer must prove if necessary). Otherwise to be returned to original vendor. Goods must be in re-sellable condition, in the opinion of R&G Racing. All returns are subject to a 25% restocking and handling fee (25% of the gross value exc. P&P – at the prevailing price at time of purchase). The customer must pay any and all carriage charges. No returns of discontinued products, unless within 14 days of purchase. This policy does not affect your statutory rights and does not refer to faulty goods.