



**FITTING INSTRUCTIONS FOR TG0018 CHAIN & SPROCKET GUARD –
UNIVERSAL FITMENT (RECOMMENDED FOR KAWASAKI)**



This kit contains the items pictured and labelled over the page.

Some parts may be shown for clarity of instructions only.

Do not proceed until you are sure all parts are present.

Please read all instructions before proceeding.

**IF IN ANY DOUBT WHEN FITTING OUR PRODUCTS, CONSULT ONE OF OUR DEALERS
OR HAVE FITTED BY A QUALIFIED TECHNICIAN.**

Please note that the way the kit is packed does not necessarily represent the way of mounting to the bike.

In the event of rubber washers being used to hold components onto bolts, these rubber washers can be thrown away.

DIGITAL COPIES OF THESE INSTRUCTIONS ARE AVAILABLE FROM

WWW.RG-RACING.COM

R&G

Unit 1, Shelley's Lane, East Worldham, Alton, Hampshire, GU34 3AQ

Tel: +44 (0)1420 89007 Fax: +44 (0)1420 87301 www.rg-racing.com Email: info@rg-racing.com



<u>TOOLS REQUIRED</u>	<u>GENERAL TORQUE SETTINGS</u>
<ul style="list-style-type: none"> • 5MM DRILL BIT + DRILL • M6 x 1.00 TAP + TAP WRENCH <ul style="list-style-type: none"> • MARKER • PUNCH • 4mm & 5mm HEX KEYS 	M4 BOLT = 8Nm M5 BOLT = 12Nm M6 BOLT = 15Nm M8 BOLT = 20Nm M10 BOLT = 40Nm M12 BOLT = 40Nm

LEGEND

ITEM No.	DESCRIPTION	QTY
ITEM 1	MTG0018 CHAIN & SPROCKET GUARD	1
ITEM 2	M0614 MOUNT BLOCK	1
ITEM 3	M6x25MM CAP HEAD BOLT	2
ITEM 4	M6x15MM COUNTERSUNK BOLTS	2
ITEM 5	S1283 M6 COMPRESSION SLEEVE	1
ITEM 6	S1284 M8 COMPRESSION SLEEVE	1
ITEM 7	M10x19MM O/D WASHER	1
ITEM 8	M10 ANTI-ROTATION WASHER	1
ITEM 9	M6x25mm BUTTON HEAD BOLT	1
ITEM 10	M8x25mm BUTTON HEAD BOLT	1
ITEM 11	M10x25mm BUTTON HEAD BOLT	1

FITTING INSTRUCTIONS

THE INSTRUCTIONS BELOW DETAIL TWO SEPARATE FITTING OPTIONS. CHOOSE WHICH IS MOST SUITABLE FOR YOUR BIKE.

- For all fitting options, when positioning the Chain and Sprocket guard, ensure that:
 - The lower chain and sprocket area are covered.
 - The flat rear section of the Chain & Sprocket guard should cover the lower section of the sprocket.
 - The Chain and sprocket guard should be placed in parallel with the chain where it cannot come into contact with any moving components of the motorcycle. Consider any vertical or lateral movement of the chain and wheel assembly when placing the Chain & Sprocket guard.
 - Where bikes are fitted with a lower boss for aftermarket Cotton Reels for use with a paddock stand. Where applicable, the mount block (**item 2**) can be placed over this giving greater flexibility when fitting, in this instance, fit the Cotton Reel to help position the block as shown in the example on page 3.
 - See example of the intended coverage below:

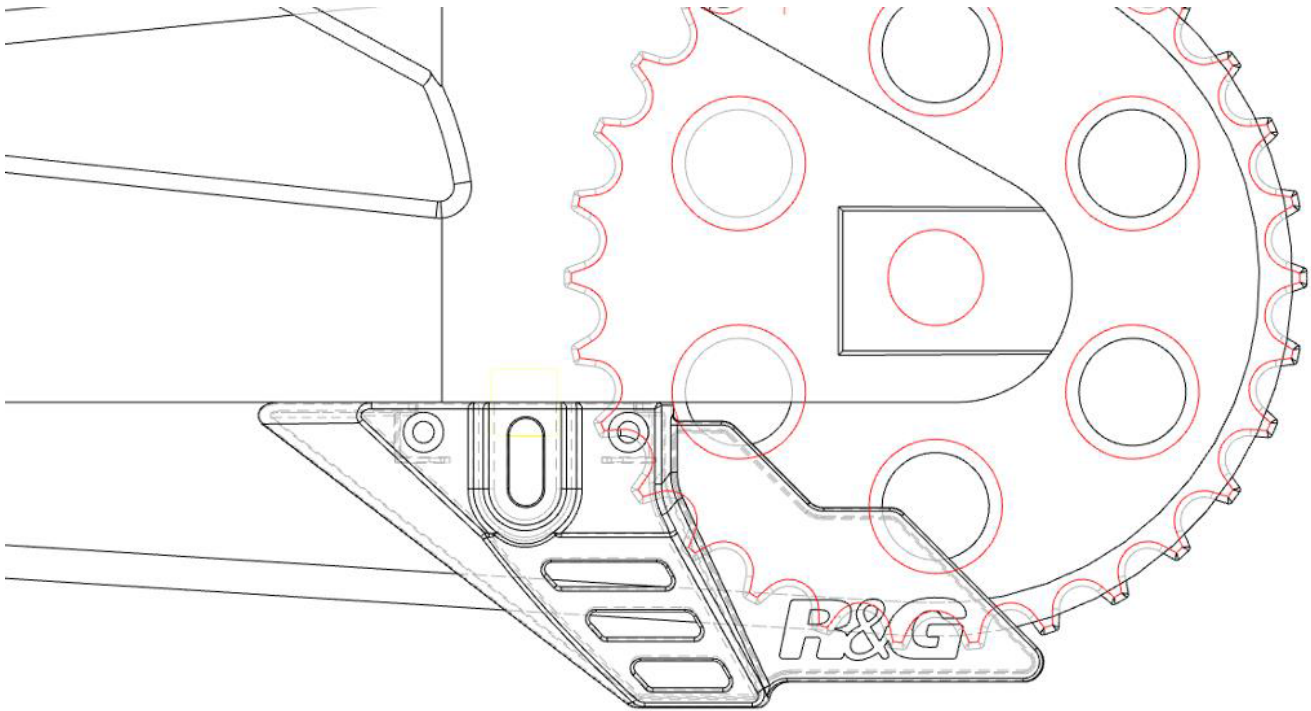
R&G

Unit 1, Shelley's Lane, East Worldham, Alton, Hampshire, GU34 3AQ

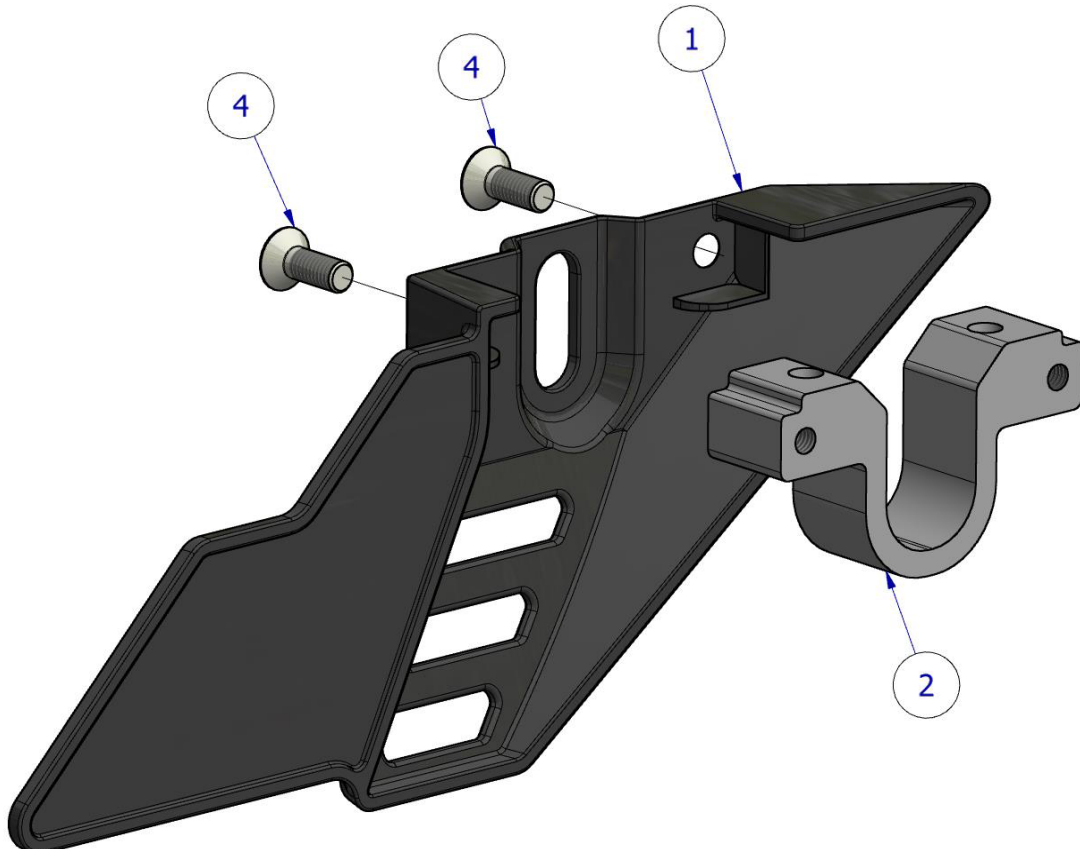
Tel: +44 (0)1420 89007 Fax: +44 (0)1420 87301 www.rg-racing.com Email: info@rg-racing.com



INTENDED COVERAGE

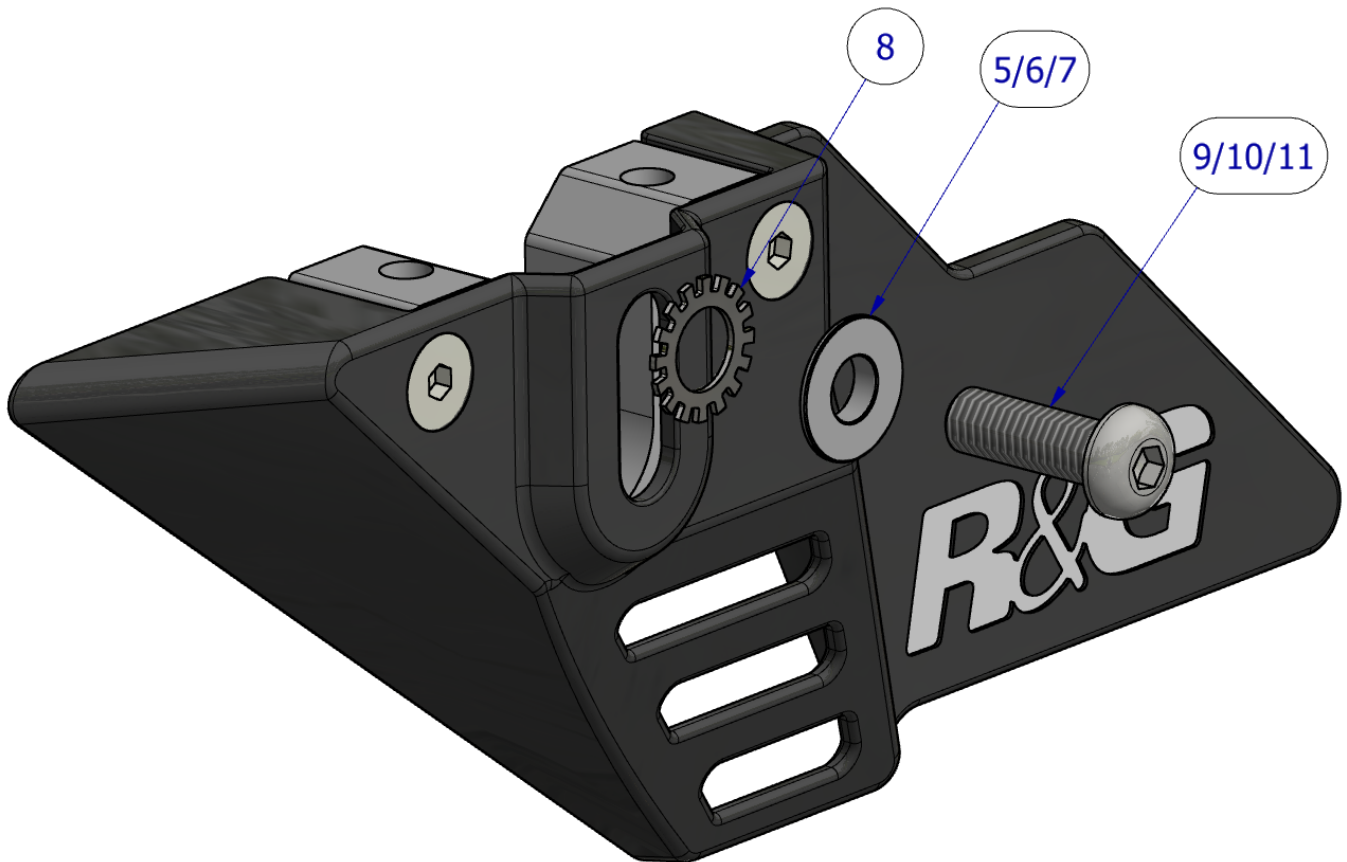


ASSEMBLY DIAGRAM 1





ASSEMBLY DIAGRAM 2



If fitting using the OEM Cotton Reel mount (Non-Drilled fitment)

- On some motorcycles, it is possible to fit the chain and sprocket guard using the lower boss on the swingarm for Cotton Reel mount without modification to the swingarm.
- Assemble the Chain & Sprocket guard according to **Assembly diagram 1** above by securing the aluminium Mount block (**M0614 - item 2**) to the Chain and sprocket Guard (**item 1**) using the countersunk bolts (**item 4**) tightened to the recommended torque.
- Next, referring to the legend, use the corresponding bolt and compression sleeve size suited to your bike in conjunction with the M10 anti-rotation washer (**item 8**) to affix the assembly in place as shown in **Assembly diagram 2**, ensuring the M10 anti rotation washer (**item 8**) sits against the plastic chain & sprocket guard (this washer will 'bed in' to the guard to prevent movement when riding).
- Tighten the bolt to the recommended torque and check the guard is secure.
- If fitting in conjunction with Cotton Reels, proceed to fit in the same way using the Cotton Reel bolt in place of the bolt included with this kit, with the Cotton Reel on the outside of the compression sleeve (**Item 5, 6 or 7**), ensuring to use the compression sleeve and anti-rotation washer as directed above and tighten to the recommended torque.
- Check bolt tightness regularly.

R&G

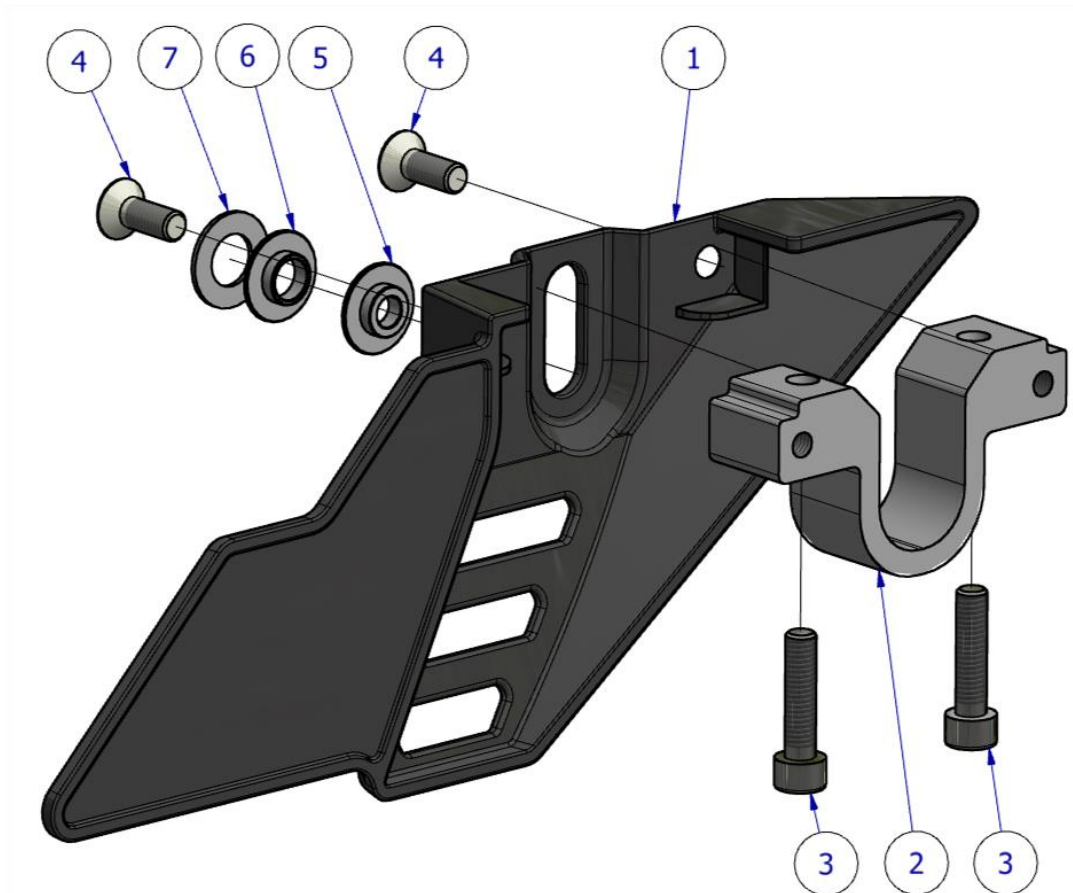
Unit 1, Shelley's Lane, East Worldham, Alton, Hampshire, GU34 3AQ

Tel: +44 (0)1420 89007 Fax: +44 (0)1420 87301 www.rg-racing.com Email: info@rg-racing.com



If mounting directly to the swingarm (Drilled fitment)

To fit the chain & sprocket guard to the swingarm, the swingarm will need to be drilled and tapped with 2 x M6 holes. Do not proceed if you are not comfortable completing this step: have it fitted by a qualified technician.



ASSEMBLY DIAGRAM 3

- Loosely assemble the Chain & Sprocket guard as shown in **Assembly Diagram 1** on page 3 and offer into position on the nearside of the swingarm. See fitting example on page 3 for intended coverage. **If intending to use in conjunction with a Cotton Reel, mount this as shown in the diagram on page 6 to help mark hole positions.**
- Disassemble the Chain and sprocket guard and mark the two hole positions with a pen or marking tool using the mounting block as a guide. *Ensure the holes are drilled away from the wall of the swingarm.*
- Use a punch or similar to ensure holes are drilled in the correct position.
- Once drilled, carefully tap the holes using an M6x1.00 Tap, using the mounting block (**item 2**) as a guide if necessary.
- Referring to **Assembly Diagram 3**, fit the Mounting Block (**M0614 - item 2**) onto the swingarm and fix in place using the two M6 cap head bolts (**item 3**), ensuring the cap heads fit into the recessed bore of the block. **Do not overtighten.** *Note: a small amount of thread locking compound on the bolts is recommended to keep the mounting block secure.*

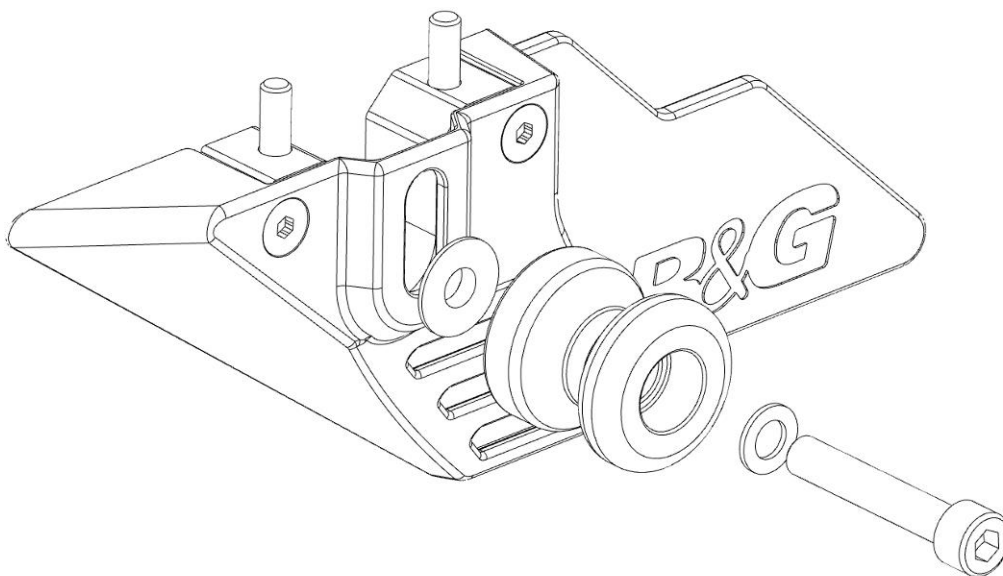
R&G

Unit 1, Shelley's Lane, East Worldham, Alton, Hampshire, GU34 3AQ

Tel: +44 (0)1420 89007 Fax: +44 (0)1420 87301 www.rg-racing.com Email: info@rg-racing.com



- Slide the Chain & Sprocket guard (**item 1**) onto the outer slots of the mount block (**item 2**) and secure using the two countersunk M6 bolts (**item 4**) as shown in **Assembly diagram 3**, tightened to the correct torque.
- If fitting in conjunction with Cotton Reels, refer to the legend to select the correct size compression sleeve or washer and locate the small boss (if applicable) into the vertical Cotton Reel slot from the outside and fit Cotton Reel as shown in the example below (in this case, the anti-rotation washer is **not** required).



ISSUE 2 12/04/2021 (DM)

CONSUMER NOTICE

The catalogue description and any exhibition of samples are only broad indications of the Products and R&G may make design changes which do not diminish their performance or visual appeal and supplying them in such state shall conform to the order. The Buyer acknowledges no representation or warranty (other than as to title) has been given or will apply to the Products other than those in R&G's order or confirmation and the Buyer confirms it has chosen the Products as being of merchantable quality and suitable for its particular purposes. Where R&G fits the Products or undertakes other services it shall exercise reasonable skill and care and rectify any fault free of charge unless the workmanship has been disturbed. The Buyer is responsible for ensuring that the warranty on the motorcycle is not affected by the fitting of the Products. On return of any defective Products R&G shall at its option either supply a replacement or refund the purchase money but shall not be liable if the Products have been modified or used or maintained otherwise than in accordance with R&G's or manufacturer's instructions and good engineering practice or if the defect arises from accident or neglect. Other than identified above and subject to R&G not limiting its liability for causing death and personal injury, it shall not be liable for indirect or consequential loss and otherwise its liability shall be limited to the amounts paid by the Buyer for the Products or the fitting or service concerned. These terms do not affect the Buyer's statutory rights.

R&G RACING RETURNS POLICY (NON-FAULTY GOODS)

Returns must be pre-authorized (if not pre-authorized the return will be rejected). Goods may only be returned direct to us if they were purchased direct from us (customer must prove if necessary). Otherwise to be returned to original vendor. Goods must be in re-sellable condition, in the opinion of R&G Racing. All returns are subject to a 25% restocking and handling fee (25% of the gross value exc. P&P – at the prevailing price at time of purchase). The customer must pay any and all carriage charges. No returns of discontinued products, unless within 14 days of purchase. This policy does not affect your statutory rights and does not refer to faulty goods.

R&G

Unit 1, Shelley's Lane, East Worldham, Alton, Hampshire, GU34 3AQ

Tel: +44 (0)1420 89007 Fax: +44 (0)1420 87301 www.rg-racing.com Email: info@rg-racing.com