



**FITTING INSTRUCTIONS FOR LP0292BK LICENCE PLATE BRACKET
FOR BMW F900R/XR 2020
(FOR USE WITH STANDARD AND R&G MINI INDICATORS (8mm))**



THIS KIT CONTAINS THE ITEMS PICTURED AND LABELLED OVER PAGE.

SOME PARTS MAY BE SHOWN FOR CLARITY OF INSTRUCTIONS ONLY.

DO NOT PROCEED UNTIL YOU ARE SURE ALL PARTS ARE PRESENT.

PLEASE READ ALL INSTRUCTIONS BEFORE PROCEEDING.

**IF IN ANY DOUBT WHEN FITTING OUR PRODUCTS, CONSULT ONE OF OUR DEALERS
OR HAVE FITTED BY A QUALIFIED TECHNICIAN.**

PLEASE NOTE THAT THE WAY THE KIT IS PACKED DOES NOT NECESSARILY REPRESENT THE WAY OF
MOUNTING TO THE BIKE.

IN THE EVENT OF RUBBER WASHERS BEING USED TO HOLD COMPONENTS ONTO BOLTS,
THESE RUBBER WASHERS CAN BE THROWN AWAY.

DIGITAL COPIES OF THESE INSTRUCTIONS ARE AVAILABLE FROM:

WWW.RG-RACING.COM

R&G

Unit 1, Shelley's Lane, East Worldham, Alton, Hampshire, GU34 3AQ
Tel: +44 (0)1420 89007 Fax: +44 (0)1420 87301 www.rg-racing.com Email: info@rg-racing.com



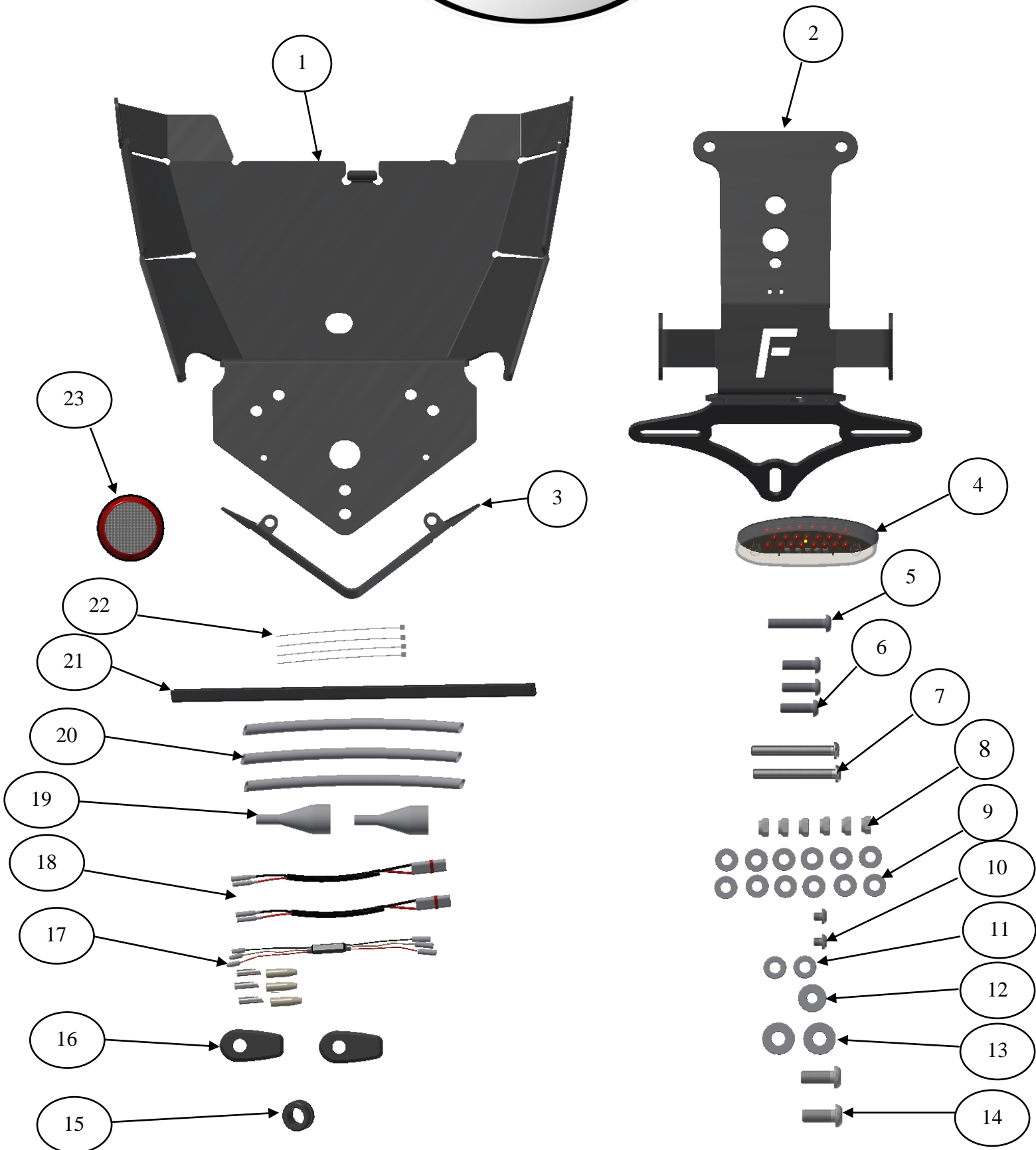
<u>TOOLS REQUIRED</u>	<u>GENERAL TORQUE SETTINGS</u>
<ul style="list-style-type: none"> • Set of metric Allen keys to include 3, 4 & 5mm A/F sizes. <ul style="list-style-type: none"> • T25, T30 and T40 Torx bits or keys. • 6 and 10mm spanner or socket and wrench. <ul style="list-style-type: none"> • Phillips type driver. • Sharp knife or scissors. • Small amount of adhesive. 	M4 BOLT = 8Nm M5 BOLT = 12Nm M6 BOLT = 15Nm M8 BOLT = 20Nm M10 BOLT = 40Nm M12 BOLT = 40Nm

ITEM NO.	LEGEND	QTY
ITEM 1	LICENCE PLATE BRACKET/COVER PLATE (TB0292 PART 1)	1
ITEM 2	LICENCE PLATE BRACKET (TB0292 PART 2)	1
ITEM 3	INFILL PANEL (TB0292 PART 3)	1
ITEM 4	REPLACEMENT REAR LIGHT (LA0010)	1
ITEM 5	M6 x 35mm LONG BUTTON HEAD BOLT	1
ITEM 6	M6 x 20mm LONG BUTTON HEAD BOLTS	3
ITEM 7	M6 x 50mm LONG BUTTON HEAD BOLTS	2
ITEM 8	M6 NYLOC NUT	6
ITEM 9	M6 WASHERS	12
ITEM 10	M5 x 5mm LONG BUTTON HEAD BOLTS	2
ITEM 11	BLANKING SPACERS (S0995=10mm LONG)	2
ITEM 12	MOUNTING SPACER (S0850=14mm LONG)	1
ITEM 13	MOUNTING SPACER (S0852=29mm LONG)	2
ITEM 14	M8x20mm LONG BUTTON HEAD BOLTS	2
ITEM 15	RUBBER WIRING GROMMET (RB0010)	1
ITEM 16	MINI INDICATOR ADAPTORS (I0041)	2
ITEM 17	REAR LIGHT CONNECTOR (CON0070 WITH BULLETS)	1
ITEM 18	R&G MINI INDICATOR CONNECTORS (CON0018)	2
ITEM 19	INDICATOR WIRING COVERS (IWC0002)	2
ITEM 20	200mm LENGTH OF HEATSHRINK	3
ITEM 21	RUBBER EDGING SEAL (SRS006=350mm LONG)	1
ITEM 22	2.5mm CABLE TIES	4
ITEM 23	REFLECTOR (REFL 3)	1

R&G

Unit 1, Shelley's Lane, East Worldham, Alton, Hampshire, GU34 3AQ

Tel: +44 (0)1420 89007 Fax: +44 (0)1420 87301 www.rg-racing.com Email: info@rg-racing.com



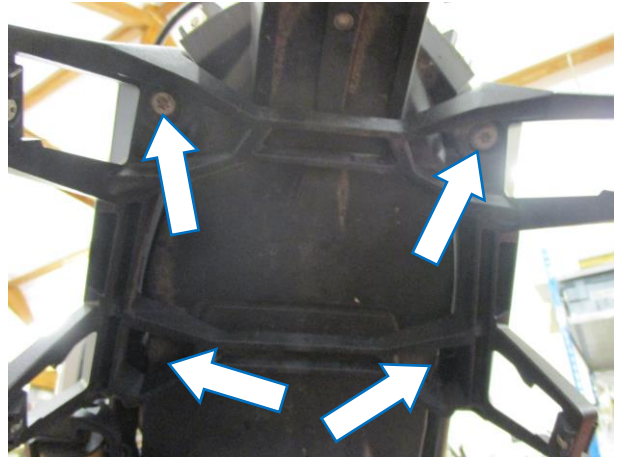
R&G

Unit 1, Shelley's Lane, East Worldham, Alton, Hampshire, GU34 3AQ

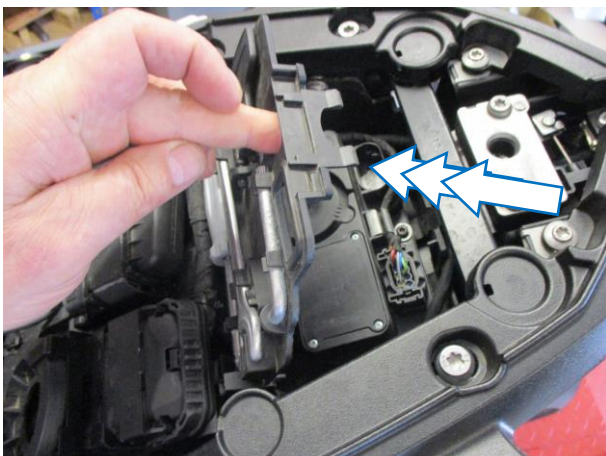
Tel: +44 (0)1420 89007 Fax: +44 (0)1420 87301 www.rg-racing.com Email: info@rg-racing.com



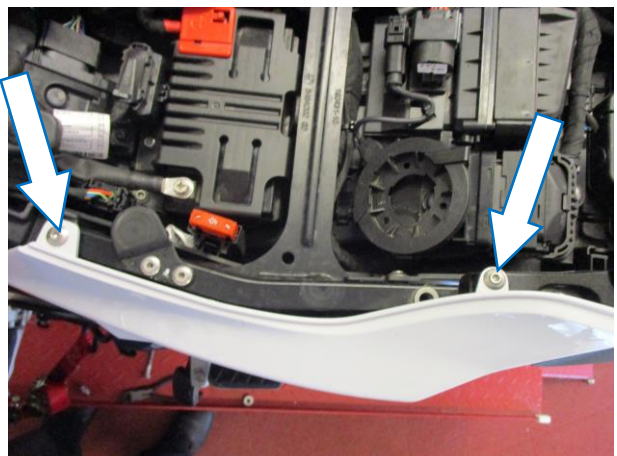
PICTURE 1



PICTURE 2



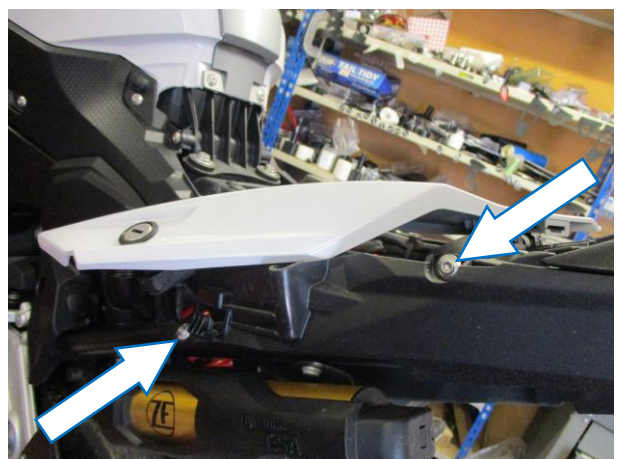
PICTURE 3



PICTURE 4



PICTURE 5

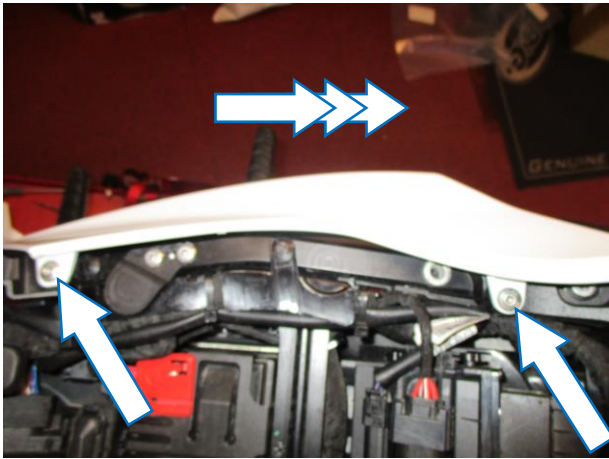


PICTURE 6

R&G

Unit 1, Shelley's Lane, East Worldham, Alton, Hampshire, GU34 3AQ

Tel: +44 (0)1420 89007 Fax: +44 (0)1420 87301 www.rg-racing.com Email: info@rg-racing.com



PICTURE 7



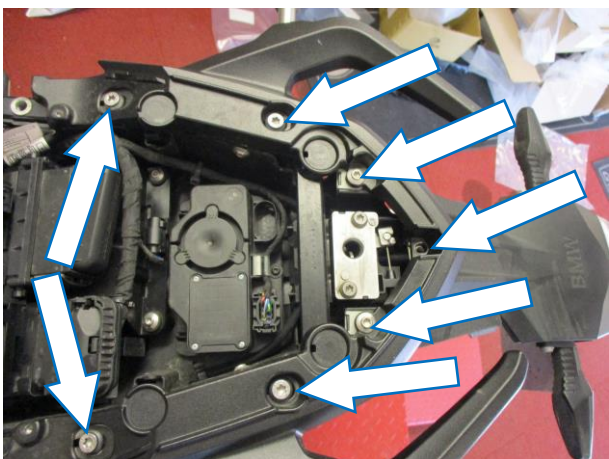
PICTURE 8



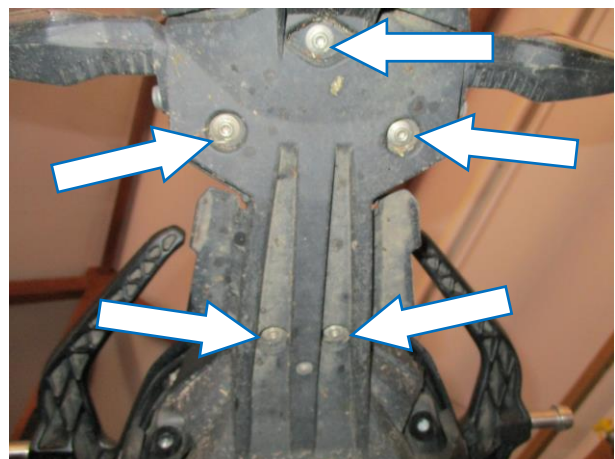
PICTURE 9



PICTURE 10



PICTURE 11



PICTURE 12

R&G

Unit 1, Shelley's Lane, East Worldham, Alton, Hampshire, GU34 3AQ

Tel: +44 (0)1420 89007 Fax: +44 (0)1420 87301 www.rg-racing.com Email: info@rg-racing.com



PICTURE 13



PICTURE 14



PICTURE 15



PICTURE 16



PICTURE 17

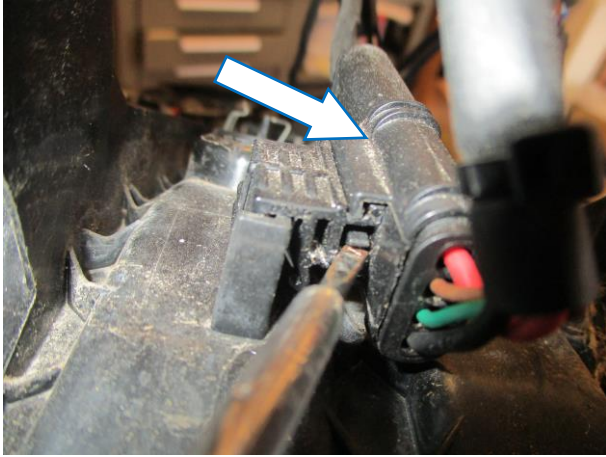


PICTURE 18

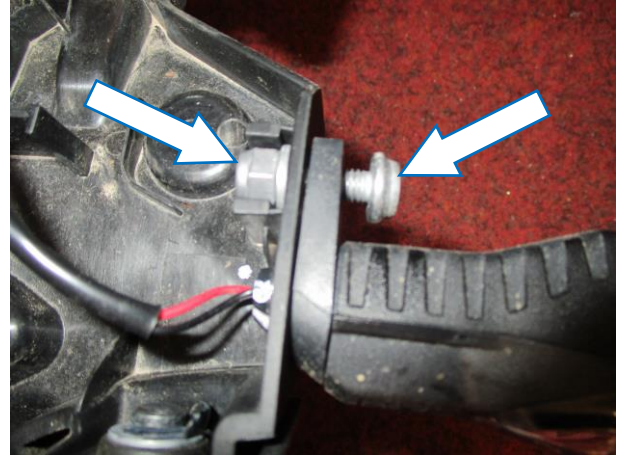
R&G

Unit 1, Shelley's Lane, East Worldham, Alton, Hampshire, GU34 3AQ

Tel: +44 (0)1420 89007 Fax: +44 (0)1420 87301 www.rg-racing.com Email: info@rg-racing.com



PICTURE 19



PICTURE 20



PICTURE 21



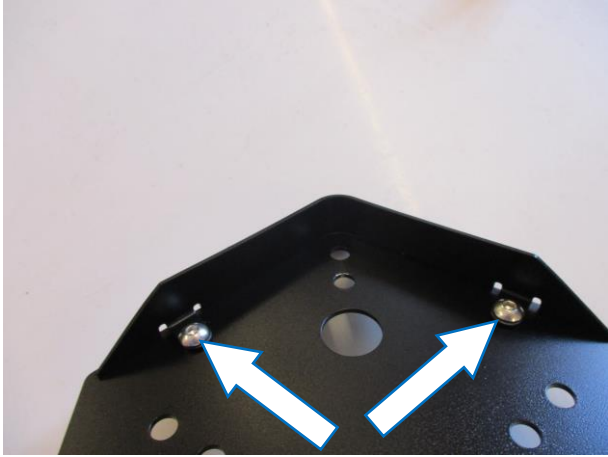
PICTURE 22



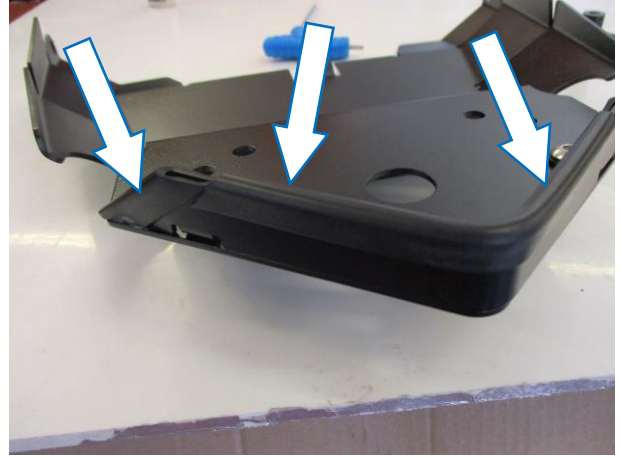
PICTURE 23



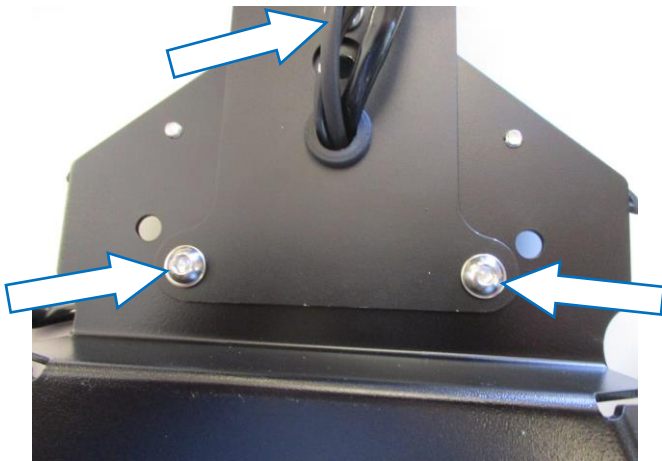
PICTURE 24



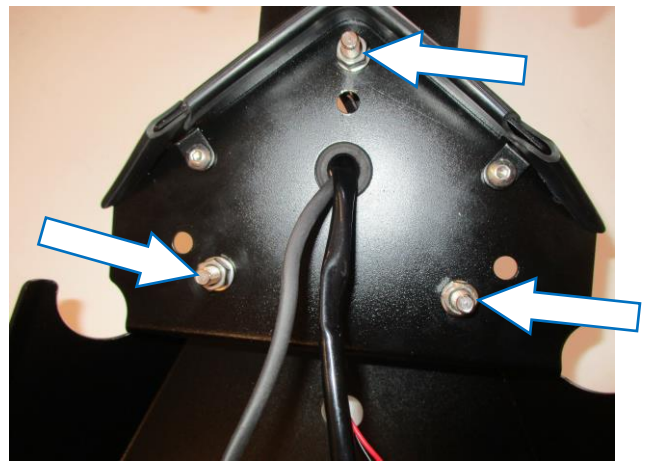
PICTURE 25



PICTURE 26



PICTURE 27



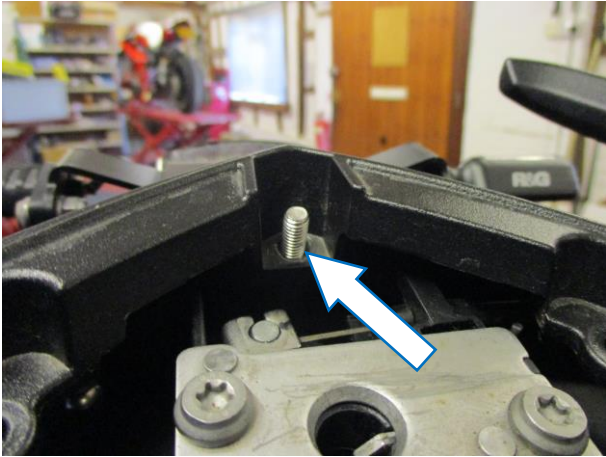
PICTURE 28



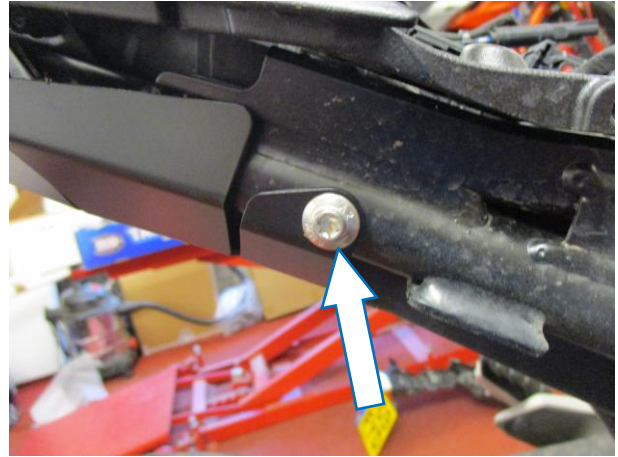
PICTURE 29



PICTURE 30



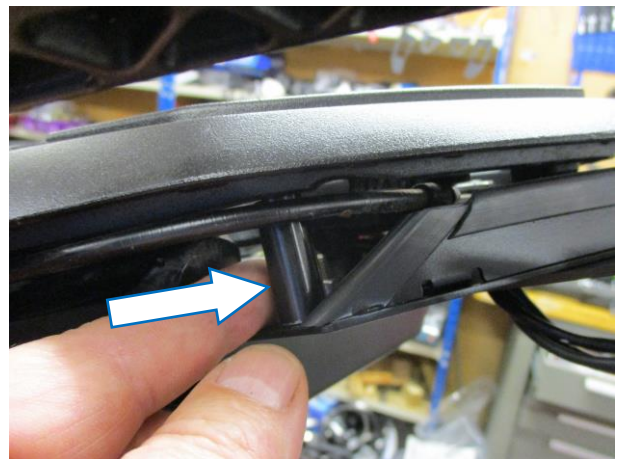
PICTURE 31



PICTURE 32



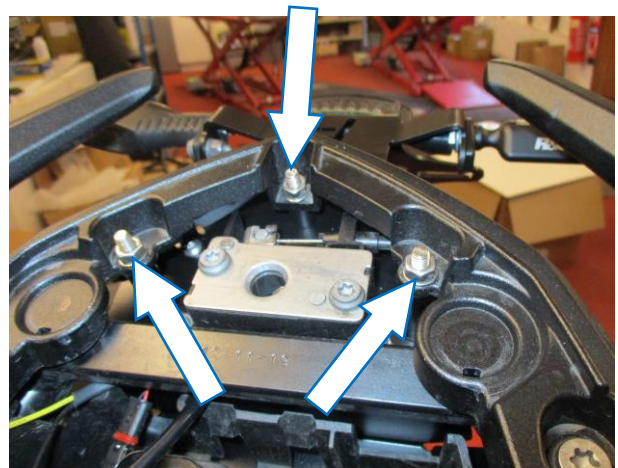
PICTURE 33



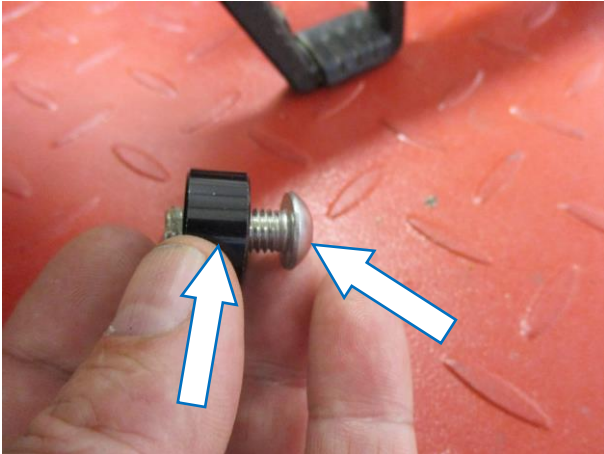
PICTURE 34



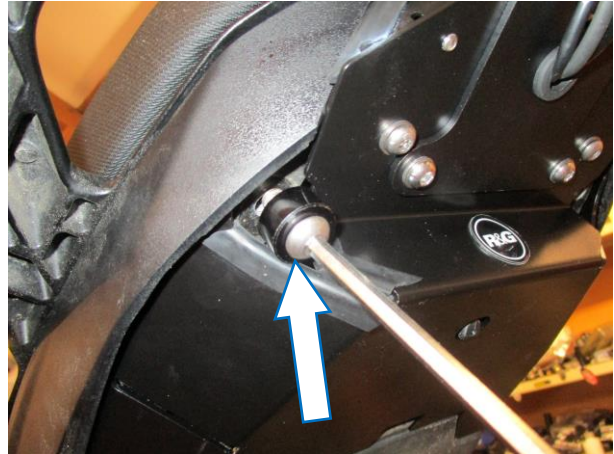
PICTURE 35



PICTURE 36



PICTURE 37



PICTURE 38

FITTING INSTRUCTIONS

- Remove the seat using key as shown in **picture 1**.
- Remove the four bolts arrowed in **picture 2** and carefully remove the luggage mounting frame if fitted.
- Remove the tool carrier as shown in **picture 3**.
- Remove the two bolts arrowed in **picture 4** and carefully unclip the coloured seat panel as shown in **picture 5** (you do not need to disconnect the seat catch mechanism leave the panel resting on the frame ensuring it is not damaged).
- Remove the two bolts arrowed in **picture 6** and carefully unclip and remove the black plastic seat panel.
- Remove the two bolts arrowed in **picture 7** and carefully unclip and remove the coloured seat panel.
- Remove the two bolts arrowed in **picture 8** and carefully unclip and remove the black plastic seat panel.
- Remove all the bolts arrowed in **pictures 9 thru 14**, then remove the grab rail.
- Remove the licence plate bracket top cover as shown in **picture 15**.
- Remove the cable ties and disconnect the indicator wiring plug sockets arrowed in **pictures 15 and 16**.
- Disconnect the two wiring plug sockets arrowed in **pictures 17 and 18**.
- Remove the wiring plug socket holder arrowed in **picture 19** from the original licence plate bracket.
- Remove the bolt arrowed in **picture 20**, then rotate and remove both the original indicators if fitting to the new licence plate bracket.
- Place all the original wiring into the under-seat space.
- Fit the new rear light (**item 4**) to the licence plate bracket (**item 2**) as shown in **picture 21** (please ensure the licence plate illuminating led's face downwards).

To fit the original indicators

- Offer into position and secure using the original nut and bolt as shown in **picture 22**

To fit the R&G indicators of choice (R&G mini indicator product code RG370 for bulb type And RG371 for LED type or RG372 for Aero Style led type)

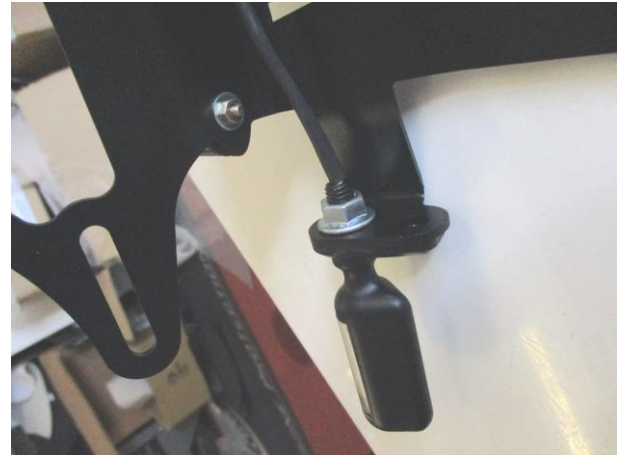
R&G

Unit 1, Shelley's Lane, East Worldham, Alton, Hampshire, GU34 3AQ

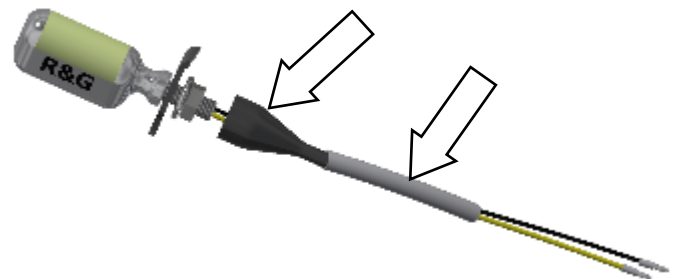
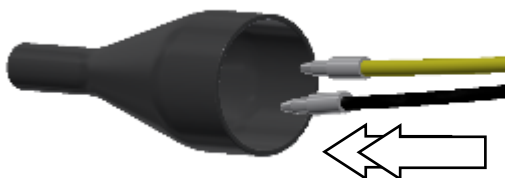
Tel: +44 (0)1420 89007 Fax: +44 (0)1420 87301 www.rg-racing.com Email: info@rg-racing.com



- Feed the new indicator wiring through the hole in one of the indicator adaptor plates (**item 16**) as shown in **picture 23** and offer up to the indicator aperture in the licence plate bracket (**item 2**) as shown in the **pictures below** (so the shaped location spigot will fit into the aperture).



- Fit the indicator nut and tighten as shown in **picture above**.
- Feed the indicator wiring through one of the nut/wire covers (**item 19**) as shown in **pictures below** (it helps if a small amount of liquid detergent is used) and position the nut cover over the nut.
- Fit one length of heat-shrink (**item 20**) over the wires of each indicator so the heat-shrink fits over the stem of the nut/wire cover and gently heat until the heat-shrink contracts to the wiring and nut/wire cover as shown in **pictures below**.



- Fit the rubber wiring grommet (**item 15**) into the licence plate bracket (**item 2**) as arrowed in **picture 24** and feed wiring for the new rear light and indicators through the grommet.
- Fit the infill panel (**item 3**) to the licence plate bracket/cover (**item 1**) using the two M5 bolts (**item 10**) as shown in **picture 25**.
- Cut the edging seal (**item 21**) to shape and stick in position as shown in **picture 26**.
- Mount **item 2** to **item 1** using the bolts washers and nuts (**items 6, 8 and 9**) as shown in **pictures 27 and 28**.
- Refit the grab rail and loosely tighten the original bolts to hold in position.
- Place the 35mm long M6 bolt with washer (**items 5 and 9**) through the assembly as shown in **picture 29**, then place the 14mm long spacer (**item 12**) over the exposed thread as shown in **picture 30**.
- Offer the whole assembly into position while feeding the wiring though to the under-seat space and secure in place with a nut and washer (**items 8 and 9**) as shown in **picture**

R&G

Unit 1, Shelley's Lane, East Worldham, Alton, Hampshire, GU34 3AQ

Tel: +44 (0)1420 89007 Fax: +44 (0)1420 87301 www.rg-racing.com Email: info@rg-racing.com



31 (do not fully tighten at this stage).

- Reuse the original bolts to secure in position arrowed in **pictures 32** and **33**.
- Place one of 29mm long spacers (**item 13**) into position indicated in **picture 34**, then place the longest M6 bolts (**item 7**) through the licence plate bracket and spacer and into the grab rail as shown in **picture 35** and secure in place using a nut and washer as shown in **picture 36**.
- Repeat the above for the other mount.
- Tighten all bolts.
- The remainder of the rubber seal should be cut and stuck around the aperture for the pannier mounting bracket as shown in **picture 38**.
- If not fitting the pannier mounting bracket, we have supplied a blanking spacer and bolt (items **11** and **14**) as shown in **pictures 37** and **38**.
- Reconnect the indicators to the original wiring plug socket using the supplied connector (**item 18**) (it is a good idea to test the indicator at this stage if illumination fails, swap the bullet connections around). If using R&G led indicators you will need to use a resistor (R&G product code RGR0002, sold separately) to achieve the correct flash rate.
- To connect the rear light, we suggest cutting the original plug socket and use the supplied bullet connectors to join to the wiring loom as explained below.
- Cut the original plug from the loom approximately 50mm from the plug socket and strip the three wires on the loom end and fit the female bullet connectors with covers as shown below.



- Connect the new rear light resistor (**item 17**) to the original wiring loom as shown below.
ORIGINAL LOOM WIRE----- NEW REAR LIGHT RESISTOR (ITEM 17)
 BLACK/GREY-----BLACK
 GREY/RED-----RED
 BROWN-----BROWN
- Connect the new rear light resistor (**item 17**) to the new rear light (**item 4**) as shown below.

NEW REAR LIGHT WIRE RESISTOR (ITEM 17)-----NEW REAR LIGHT
 GREY-----BLACK
 RED-----RED
 BROWN-----BROWN

It is a good idea at this stage to test all indicators and lights

- Tidy all the wiring and ensure none are trapped/cut when fitting the seat.
- Refit all panels as original.
- Please re-check the operation of indicators and lighting before riding the motorcycle.
- Refit the rider/pillion seats as original and licence plate (it may require drilling).
- **IMPORTANT: IF FITTING A FULL-SIZE LICENCE PLATE AND PLACING IT FAR DOWN ON THE LICENCE PLATE HANGER, THERE IS A SMALL CHANCE OF THE LICENCE PLATE HITTING THE BACK WHEEL UNDER HEAVY LOAD AND OVER LARGE BUMPS IN THE ROAD. IT IS YOUR RESPONSIBILITY TO CHECK FOR THIS POSSIBILITY AND TAKE AVOIDING ACTION. FAILURE TO CHECK THIS COULD RESULT IN SERIOUS INJURY.**
- Depending on local laws, attach enclosed reflector (**item 23**) in an appropriate location.

ISSUE 1 06/07/2020 (NSY)

R&G

Unit 1, Shelley's Lane, East Worldham, Alton, Hampshire, GU34 3AQ

Tel: +44 (0)1420 89007 Fax: +44 (0)1420 87301 www.rg-racing.com Email: info@rg-racing.com