



**FITTING INSTRUCTIONS FOR LP0303BK LICENCE PLATE BRACKET
FOR HONDA CRF250L/M/RALLY 2019-
FOR ORIGINAL AND AFTERMARKET M8 INDICATORS**



THIS KIT CONTAINS THE ITEMS PICTURED AND LABELLED OVER PAGE.

SOME PARTS MAY BE SHOWN FOR CLARITY OF INSTRUCTIONS ONLY.

DO NOT PROCEED UNTIL YOU ARE SURE ALL PARTS ARE PRESENT.

PLEASE READ ALL INSTRUCTIONS BEFORE PROCEEDING.

**IF IN ANY DOUBT WHEN FITTING OUR PRODUCTS, CONSULT ONE OF
OUR DEALERS OR HAVE FITTED BY A QUALIFIED TECHNICIAN.**

PLEASE NOTE THAT THE WAY THE KIT IS PACKED DOES NOT NECESSARILY REPRESENT THE
WAY OF MOUNTING TO THE BIKE.

IN THE EVENT OF RUBBER WASHERS BEING USED TO HOLD COMPONENTS ONTO BOLTS,
THESE RUBBER WASHERS CAN BE THROWN AWAY.

DIGITAL COPIES OF THESE INSTRUCTIONS ARE AVAILABLE FROM:

WWW.RG-RACING.COM

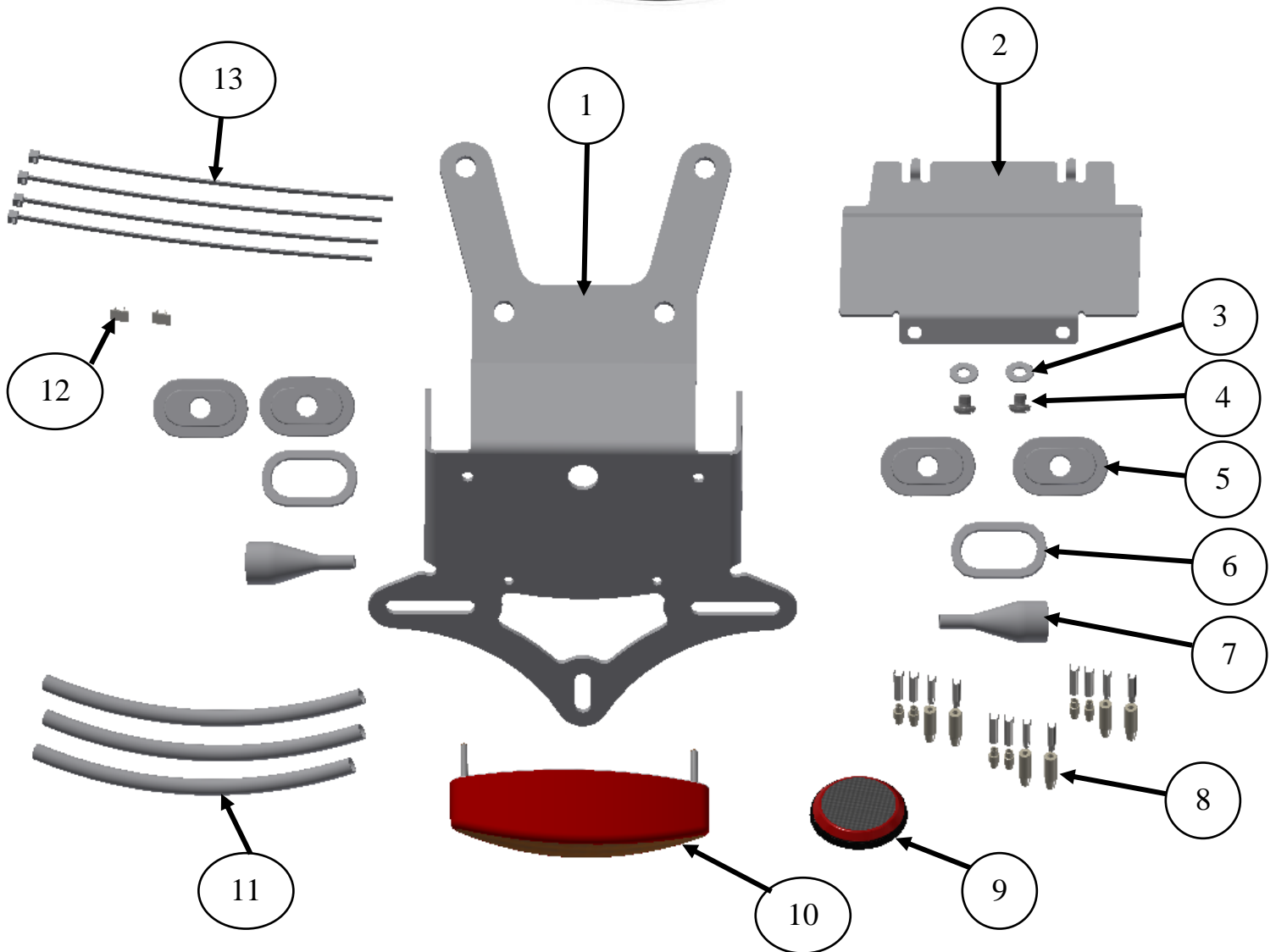


<u>TOOLS REQUIRED</u>	<u>GENERAL TORQUE SETTINGS</u>
<ul style="list-style-type: none"> • Set of metric Allen keys to include 4, 5 & 6mm A/F sizes. • 6, 10 and 12mm spanner or socket and wrench. <ul style="list-style-type: none"> • Phillips type driver. • Cable cutters/ Electrical wire crimps. 	<p>M4 BOLT = 8Nm</p> <p>M5 BOLT = 12Nm</p> <p>M6 BOLT = 15Nm</p> <p>M8 BOLT = 20Nm</p> <p>M10 BOLT = 40Nm</p> <p>M12 BOLT = 40Nm</p>

ITEM NO.	LEGEND	QTY
ITEM 1	LICENCE PLATE BRACKET (TB0303 PART 1)	1
ITEM 2	LICENCE PLATE BRACKET/COVER PLATE (TB0303 PART 2)	1
ITEM 3	M5 WASHERS	2
ITEM 4	M5 x 5mm LONG BUTTON HEAD BOLTS	2
ITEM 5	MINI INDICATOR ADAPTORS (I0065)	4
ITEM 6	ORIGINAL INDICATOR ADAPTORS (I0032)	2
ITEM 7	INDICATOR WIRING COVERS (IWC0002)	2
ITEM 8	R&G MINI INDICATOR/REAR LIGHT CONNECTORS (CON0004)	3
ITEM 9	REFLECTOR (REFL 3)	1
ITEM 10	REPLACEMENT REAR LIGHT (LA0005)	2
ITEM 11	150mm LENGTHS OF HEATSHRINK	3
ITEM 12	CABLE CLIPS (CLIP 1)	2
ITEM 13	2.5mm CABLE TIES	4



LP0303



Assembly Diagram



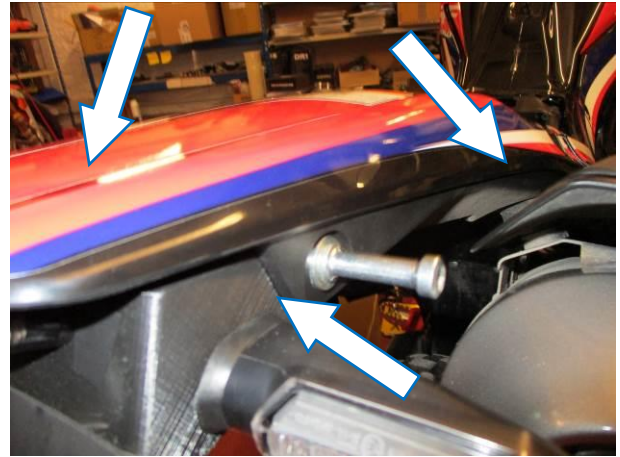
PICTURE 1



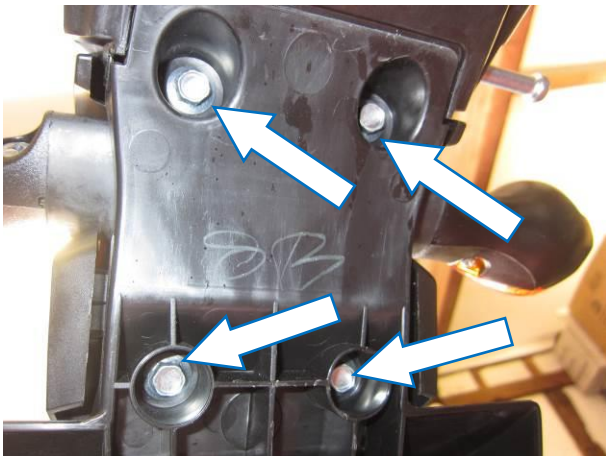
PICTURE 2



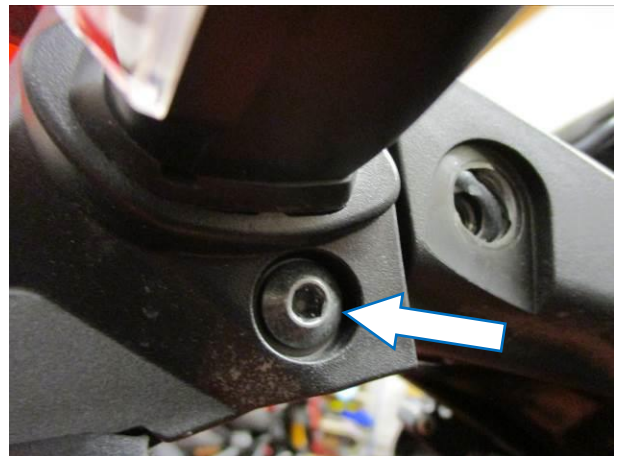
PICTURE 3



PICTURE 4



PICTURE 5



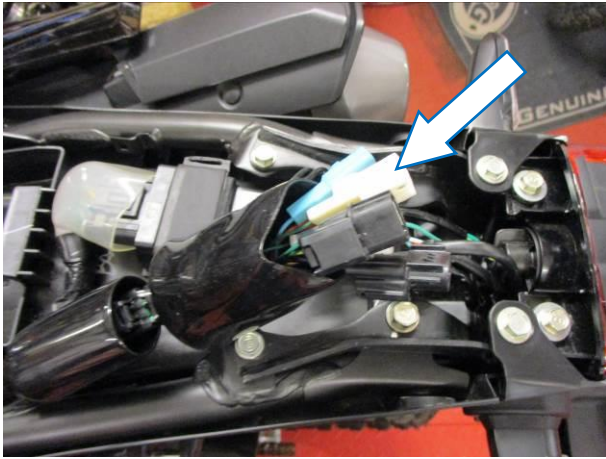
PICTURE 6



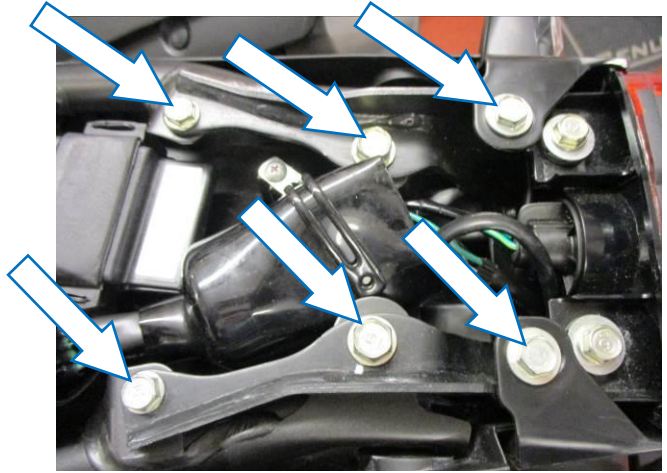
PICTURE 7



PICTURE 8



PICTURE 9



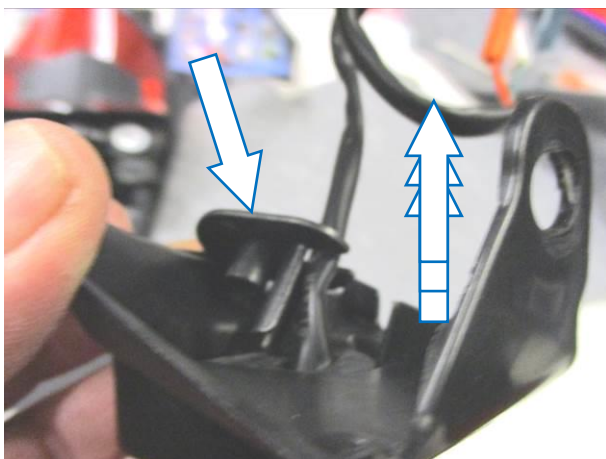
PICTURE 10



PICTURE 11



PICTURE 12



PICTURE 13



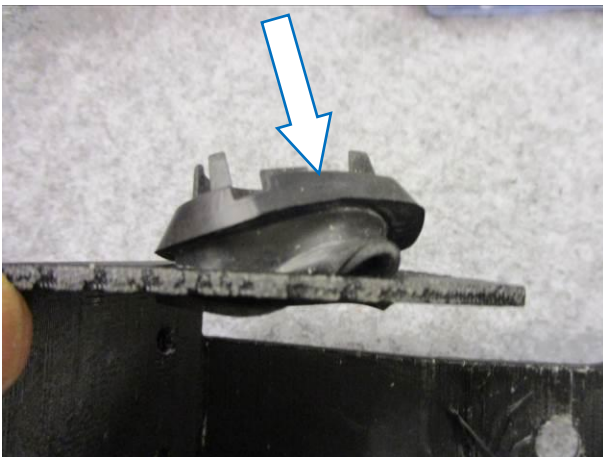
PICTURE 14



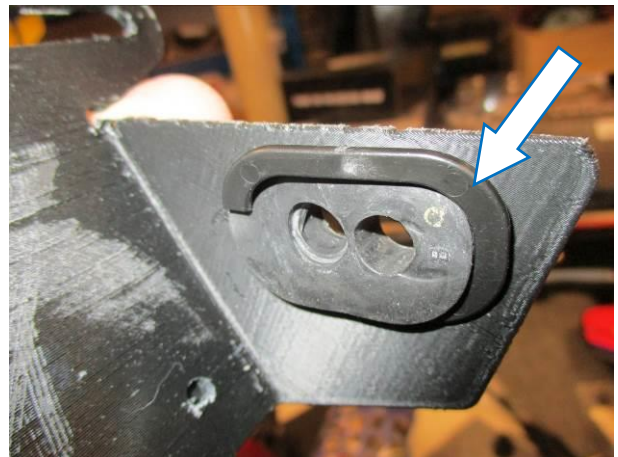
PICTURE 15



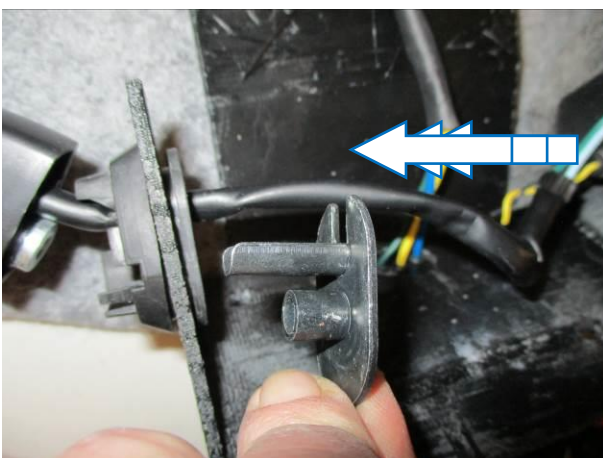
PICTURE 16



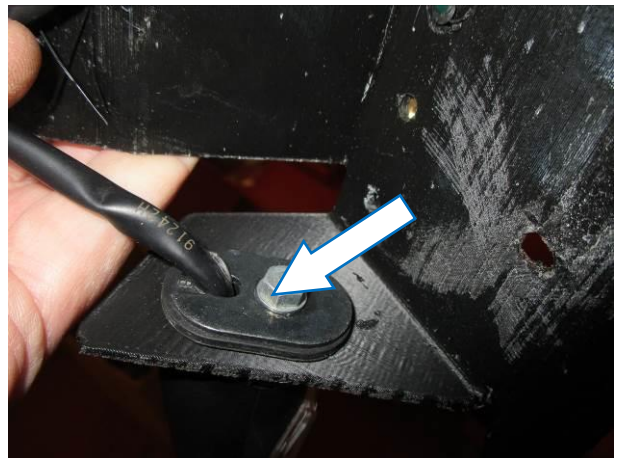
PICTURE 17



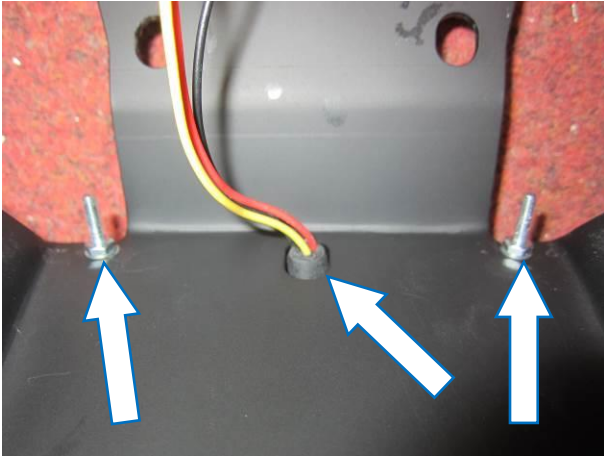
PICTURE 18



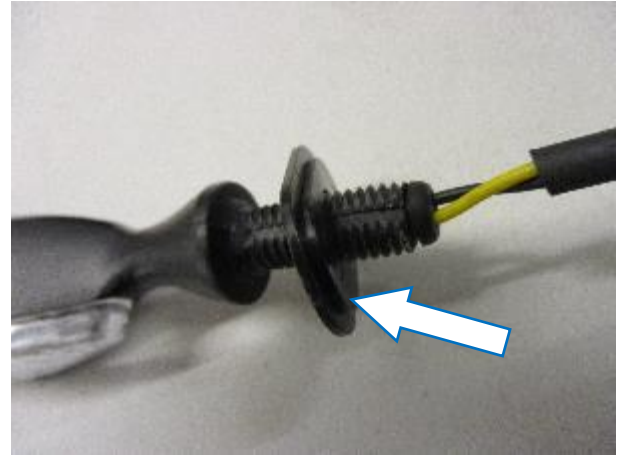
PICTURE 19



PICTURE 20



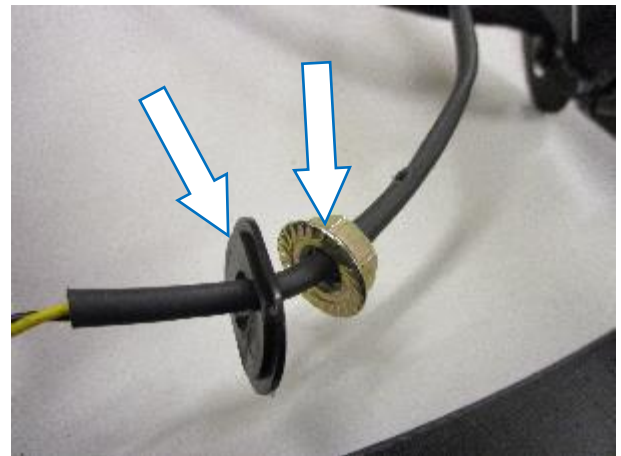
PICTURE 21



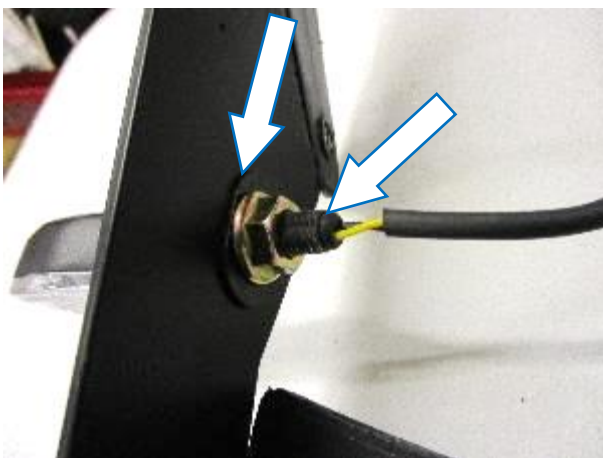
PICTURE 22



PICTURE 23



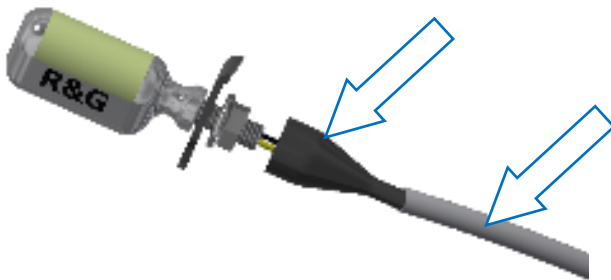
PICTURE 24



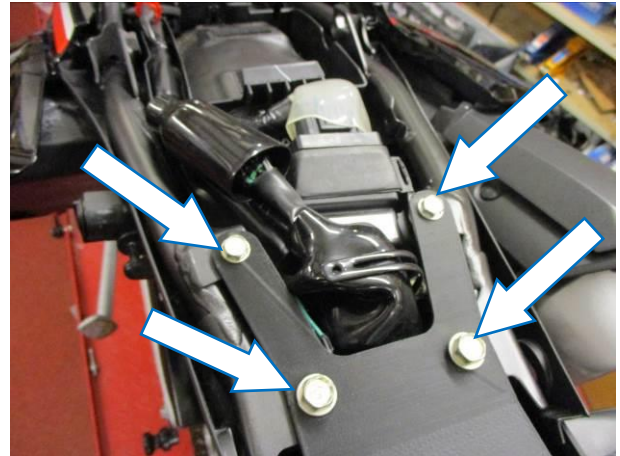
PICTURE 25



PICTURE 26



PICTURE 27



PICTURE 28



PICTURE 29



PICTURE 30

FITTING INSTRUCTIONS

- To fit the R&G tail tidy, first remove the two forward bungee hooks/bolts arrowed in **pictures 1 and 2** then remove the seat.
- Remove the two rearward bungee hooks/bolts arrowed in **pictures 3 and 4**.
- Remove the four cover bolts arrowed in **picture 5** and remove the cover.
- Remove the two bolts arrowed in **pictures 6 and 7**.
- Unclip the rear seat cowling from both sides as shown in **picture 8** and remove the cowling.
- Disconnect the wiring plug sockets as shown in **picture 9 (please note it is a good idea to label/mark the connectors for reassembly)**.
- Remove the six bolts arrowed in **picture 10** and carefully remove the original licence plate bracket.

R&G

Unit 1, Shelley's Lane, East Worldham, Alton, Hampshire, GU34 3AQ
 Tel: +44 (0)1420 89007 Fax: +44 (0)1420 87301 www.rg-racing.com Email: info@rg-racing.com



If reusing the original indicators

- Remove the two screws arrowed in **picture 11**, this will allow the bracket to be split apart for access to the indicators.
- Remove the bolt arrowed in **picture 12**, then remove the cable guide/clamping bracket as shown in **picture 13**.
- Remove the indicator from the rubber mounting grommet as shown in **picture 14**, then remove the grommet as shown in **picture 15**.
- Cut the indicator spacer (**item 6**) as shown in **picture 16**.
- Gently squeeze the grommet and fit into the new licence plate bracket (**item 1**) as shown in **picture 17**, then use the cut spacer to tighten the location of the grommet as shown in **picture 18**.
- Refit the indicator into the grommet and refit the cable guide/clamping bracket as shown in **picture 19** and secure with the original bolt as shown in **picture 20**.
- Repeat the above for the opposite indicator.
- Fit the new rear light assembly (**item 10**) to the licence plate bracket and secure using the supplied nuts and washers as shown in picture 21.

If using the mini indicators

- To fit the R&G Mini Indicators (R&G mini-indicator product code RG370 for bulb type, RG371 for LED type, RG373 for LED eyebrow or RG372 for Aero Style led type).
- Position one of the indicator adaptors (**item 5**) onto the wiring of each indicator as shown in **picture 22** (with the location spigot facing away from the indicator), place this assembly into the licence plate bracket as shown in **picture 23**.
- Place another of the adaptors onto the exposed wires (with the location spigot facing the bracket) and secure using the supplied nut as shown in **pictures 24 and 25**.
- Feed the indicator wiring through one of the nut/wire covers (**item 7**) as shown in **pictures below and picture 26** (it helps if a small amount of liquid detergent is used) and position the nut cover over the nut (repeat the above for the opposite indicator).
- Fit one length of heat-shrink (**item 11**) over the wires of each indicator so the heat-shrink fits over the stem of the nut/wire cover and gently heat until the heat-shrink contracts to the wiring and nut/wire cover as shown in **pictures below and picture 27**.



- Offer the new licence plate bracket into position and secure using the original bolts as shown in **picture 28**.
- Feed the wires into the under-seat space as original.
- Clip the new cable cover (**item 2**) to the under-tray as shown in **picture 29** and secure using the bolts with washers (**item 3 and 4**) as shown in **picture 30**.

R&G

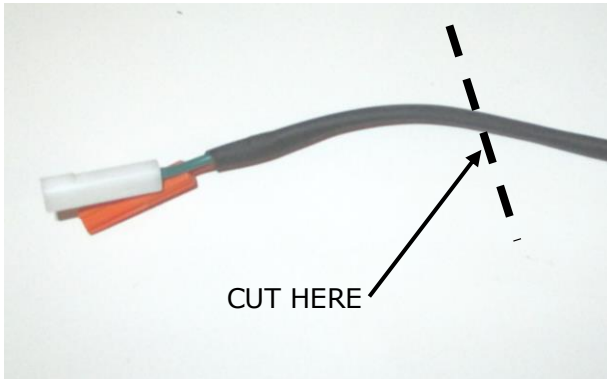


If using the original indicators

- Connect the plug sockets to the wiring loom as original.

If using the mini indicators

- We suggest cutting the original plug sockets and fitting the bullet connectors for reconnection to the wiring loom as shown below.



Picture A



Picture B

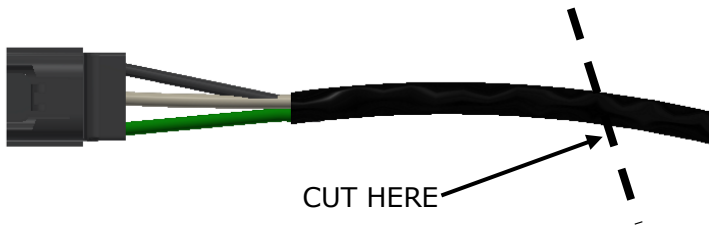


Picture C

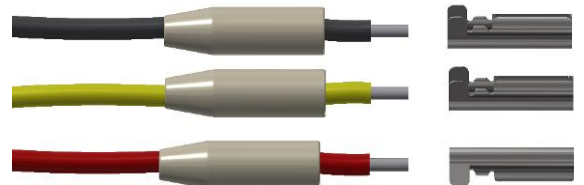
- Cut the original indicator wire as shown in **picture A**, then bare the ends of the wires, place the silicon cover over the wire and crimp the female connectors (supplied in **item 8**) to the wires as shown in **picture B**. this will result in a connector as shown in **picture C**.
- Repeat the above for the remaining indicator.

To connect the new rear light

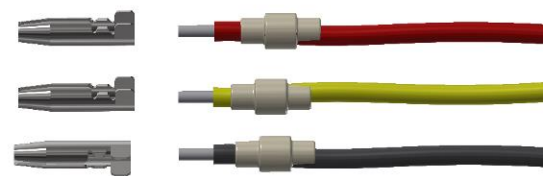
- We suggest cutting the original plug sockets and fitting the bullet connectors for reconnection to the wiring loom as shown below.



Picture D



Picture F



Picture G