



FITTING INSTRUCTIONS FOR CP0425BL
RACE AERO CRASH PROTECTORS
HONDA CBR 250RR 2017

Page | 1



Picture A

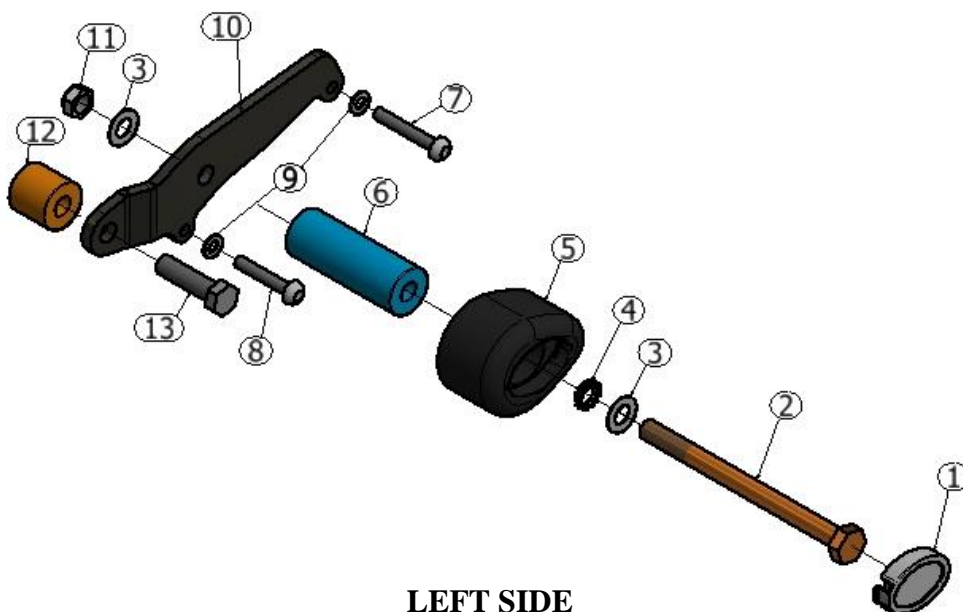


Picture B

THIS KIT CONTAINS THE ITEMS PICTURED AND LABELLED BELOW.
DO NOT PROCEED UNTIL YOU ARE SURE ALL PARTS ARE PRESENT.

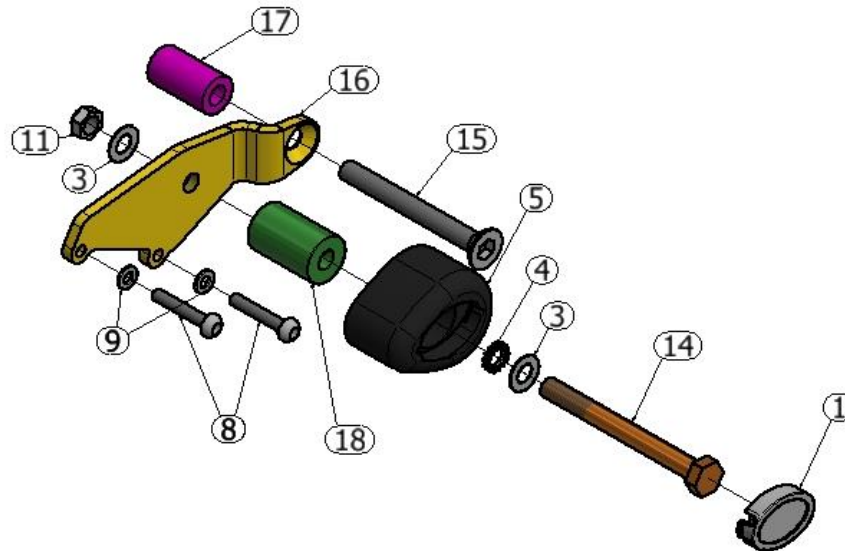
Please note that the way the kit is packed does not necessarily represent the way of mounting to the bike.

THE PARTS SHOWN MAY BE REPRESENTATIVE ONLY (FOR CLARITY OF INSTRUCTIONS ONLY).



LEFT SIDE

R&G Racing
 Unit 1, Shelley's Lane, East Worldham, Alton, Hampshire, GU34 3AQ
 Tel: +44 (0)1420 89007 Fax: +44 (0)1420 87301 www.rg-racing.com Email: info@rg-racing.com



RIGHT SIDE

LEGEND

- ITEM 1 = CRASH PROTECTOR CAPS (BC0002) (x2).
 ITEM 2 = M10 x 1.25 x 110mm LONG HEX HEAD BOLT (x1).
 ITEM 3 = M10 WASHERS (x4).
 ITEM 4 = LOCK-WASHERS (LW0001) (x2).
 ITEM 5 = CRASH PROTECTOR BOBBINS (B0472 with CS449) (x2).
 ITEM 6 = SPACER (S1010 – 70mm LONG) (x1).
 ITEM 7 = M6 x 40mm LONG BUTTON HEAD BOLT (x1)
 ITEM 8 = M6 x 35mm LONG BUTTON HEAD BOLT (x3)
 ITEM 9 = M6 WASHERS (x4)
 ITEM 10 = LHS MOUNTING BRACKET (PLATE 0203) (x1)
 ITEM 11 = M10 NYLOC NUTS (x2)
 ITEM 12 = SPACER (S0011 – 24mm LONG) (x1)
 ITEM 13 = OEM ENGINE BOLT LHS – *for illustration purpose only; not supplied in the kit*
 ITEM 14 = M10 x 75mm LONG HEX HEAD BOLT (x1)
 ITEM 15 = M10 x 85mm LONG COUNTERSUNK BOLT (x1)
 ITEM 16 = RHS MOUNTING BRACKET (PLATE 0204) (x1)
 ITEM 17 = SPACER (S1009 – 37mm LONG) (x1)
 ITEM 18 = SPACER (S1011 – 40mm LONG) (x1)

Please note that in cases where kits are packed with rubber washers holding the components onto the bolt – *the rubber washers should be thrown away!*

TOOLS REQUIRED

- 4mm & 5mm Allen Key.
- Socket set to include 14mm & 17mm socket and wrench.
 - Torque wrench (up to 40N/m).
 - 17mm spanner

R&G Racing

Unit 1, Shelley's Lane, East Worldham, Alton, Hampshire, GU34 3AQ

Tel: +44 (0)1420 89007 Fax: +44 (0)1420 87301 www.rg-racing.com Email: info@rg-racing.com



TOWARDS REAR
OF BIKE



TOWARDS FRONT
OF BIKE

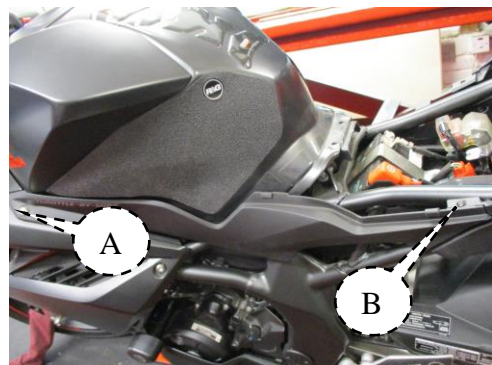
PICTURE C

GENERAL TORQUE SETTINGS

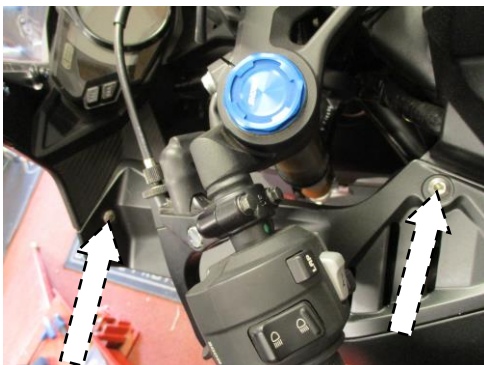
- M4 BOLT = 8Nm
- M5 BOLT = 12Nm
- M6 BOLT = 15Nm
- M8 BOLT = 20Nm
- M10 BOLT = 40Nm



PICTURE 1



PICTURE 2



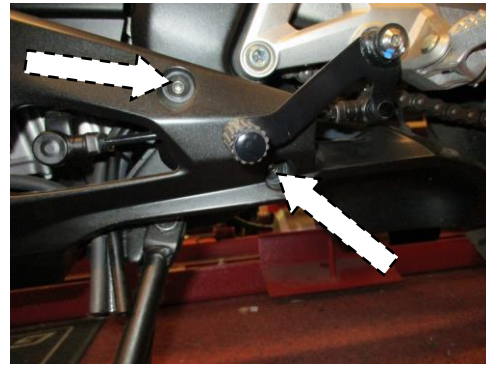
PICTURE 3



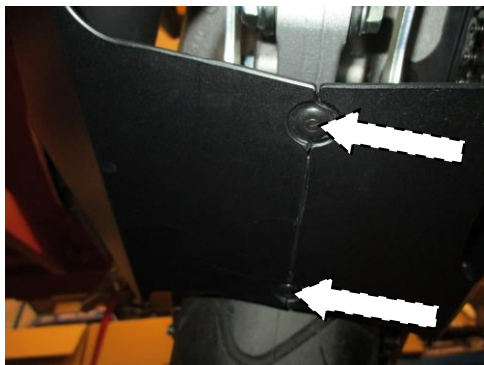
PICTURE 4



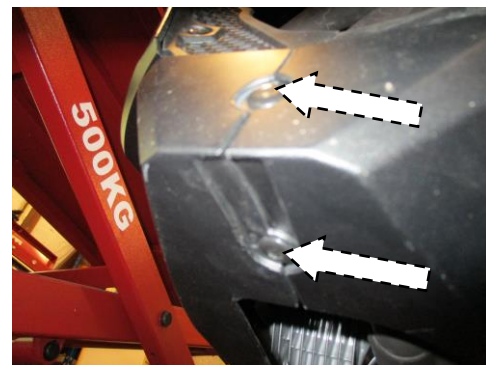
PICTURE 5



PICTURE 6



PICTURE 7



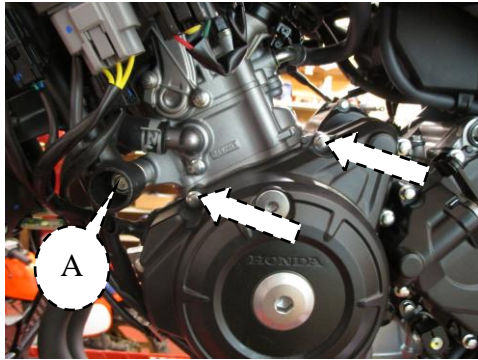
PICTURE 8



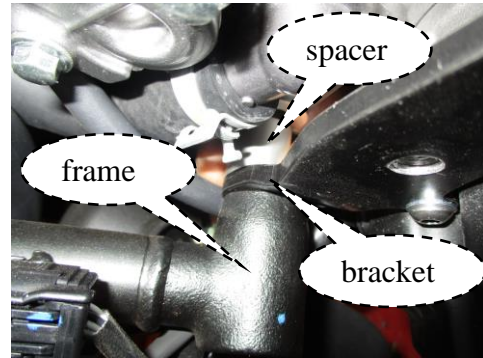
PICTURE 9



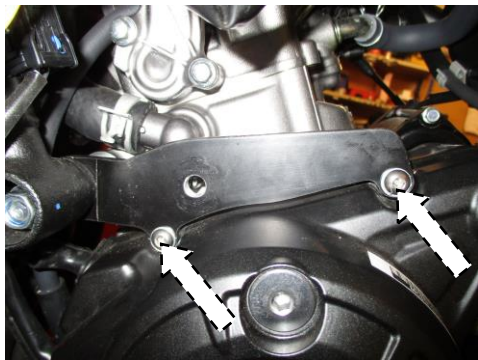
PICTURE 10



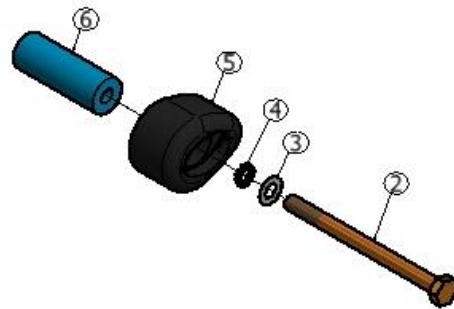
PICTURE 11



PICTURE 12



PICTURE 13



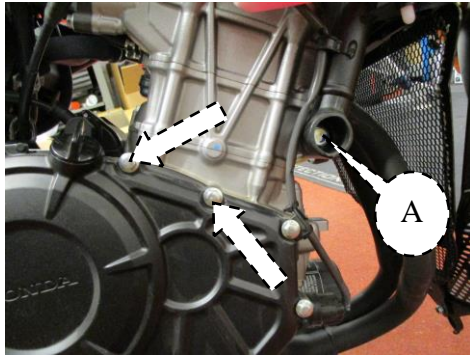
PICTURE 14



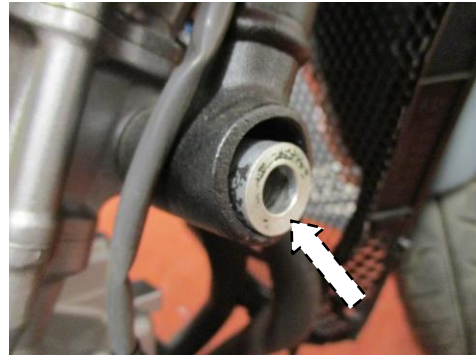
PICTURE 15



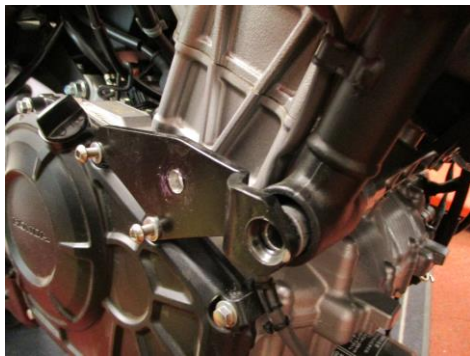
PICTURE 16



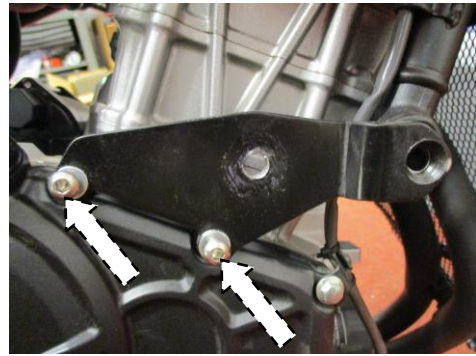
PICTURE 17



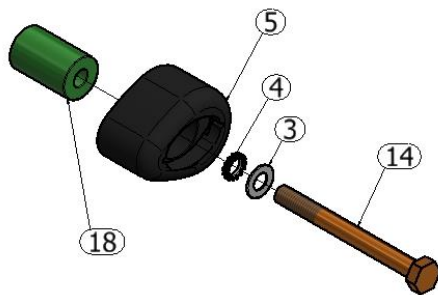
PICTURE 18



PICTURE 19



PICTURE 20



PICTURE 21