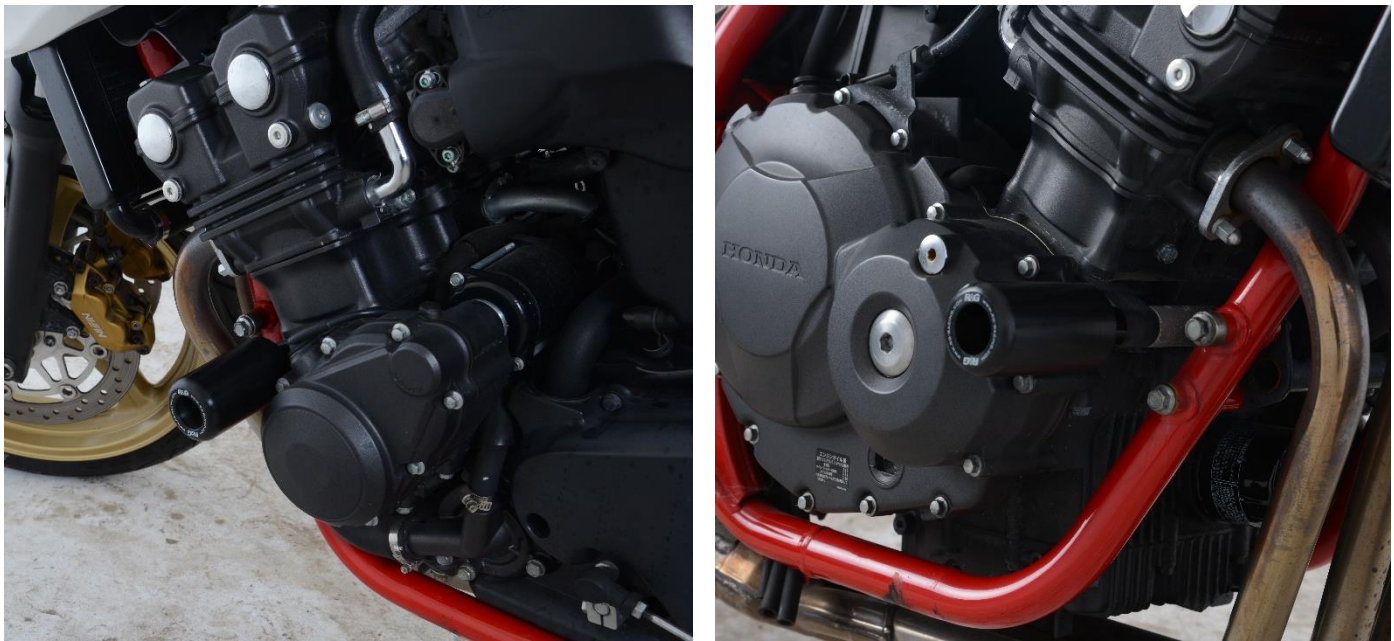




**FITTING INSTRUCTIONS FOR CP0468 CRASH PROTECTORS (ROUND)  
FOR HONDA CB400SF 2008-**



**THIS KIT CONTAINS THE ITEMS PICTURED AND LABELLED IN THE FOLLOWING INSTRUCTIONS.**

**THE PARTS SHOWN MAY BE REPRESENTATIVE OR FOR CLARITY OF INSTRUCTIONS.**

PLEASE NOTE THAT THE WAY THE KIT IS PACKED DOES NOT NECESSARILY REPRESENT THE WAY OF MOUNTING TO THE BIKE  
IN THE EVENT WHERE KITS ARE PACKED WITH RUBBER WASHERS HOLDING THE COMPONENTS ONTO THE BOLT - THE RUBBER WASHERS SHOULD BE THROWN AWAY!

**DO NOT PROCEED UNTIL YOU ARE SURE ALL PARTS ARE PRESENT**

**IF IN ANY DOUBT WHEN FITTING OUR PRODUCTS, CONSULT ONE OF OUR DEALERS OR HAVE FITTED BY A QUALIFIED TECHNICIAN.**

**DIGITAL COPIES OF THESE INSTRUCTIONS ARE AVAILABLE TO DOWNLOAD FROM:  
[WWW.RG-RACING.COM](http://WWW.RG-RACING.COM)**

R&G

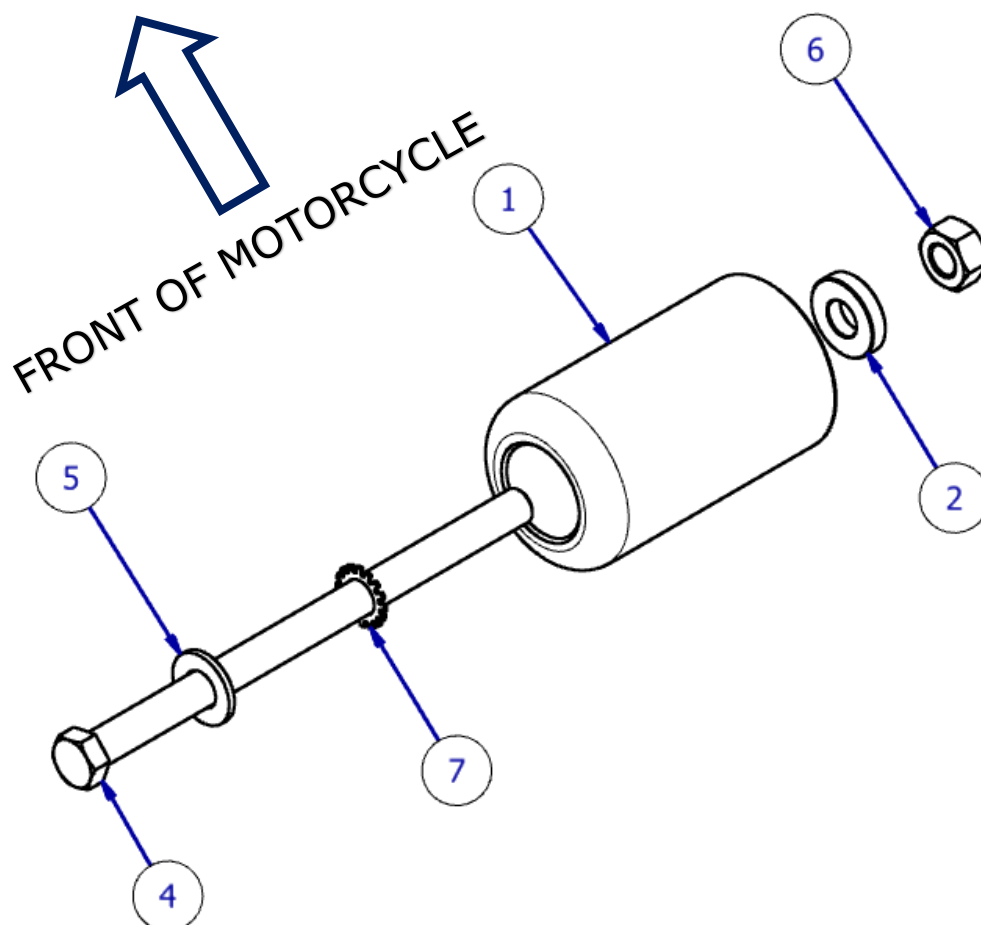
Unit 1, Shelley's Lane, East Worldham, Alton, Hampshire, GU34 3AQ  
Tel: +44 (0)1420 89007 Fax: +44 (0)1420 87301 [www.rg-racing.com](http://www.rg-racing.com) Email: [info@rg-racing.com](mailto:info@rg-racing.com)



<b><u>TOOLS REQUIRED</u></b>	<b><u>GENERAL TORQUE SETTINGS</u></b>
<ul style="list-style-type: none"> <li>• SOCKET SET TO INCLUDE 14mm and 17mm SOCKET</li> <li>• 14mm SPANNER</li> </ul>	M4 BOLT = 8Nm M5 BOLT = 12Nm M6 BOLT = 15Nm M8 BOLT = 20Nm M10 BOLT = 40Nm M12 BOLT = 40Nm

**LEGEND**

<b><u>ITEM NO.</u></b>	<b><u>DESCRIPTION</u></b>	<b><u>QTY</u></b>
ITEM 1	B0005 10MM CRASH PROTECTOR	2
ITEM 2	S0727 SPACER (5mm)	1
ITEM 3	S0326 SPACER (23mm)	1
ITEM 4	M10 x 1.25 x 180mm HEX HEAD BOLT	2
ITEM 5	M10 x 19MM OD WASHER	2
ITEM 6	M10 NYLOC NUT	2
ITEM 7	SHAKE PROOF WASHERS	2

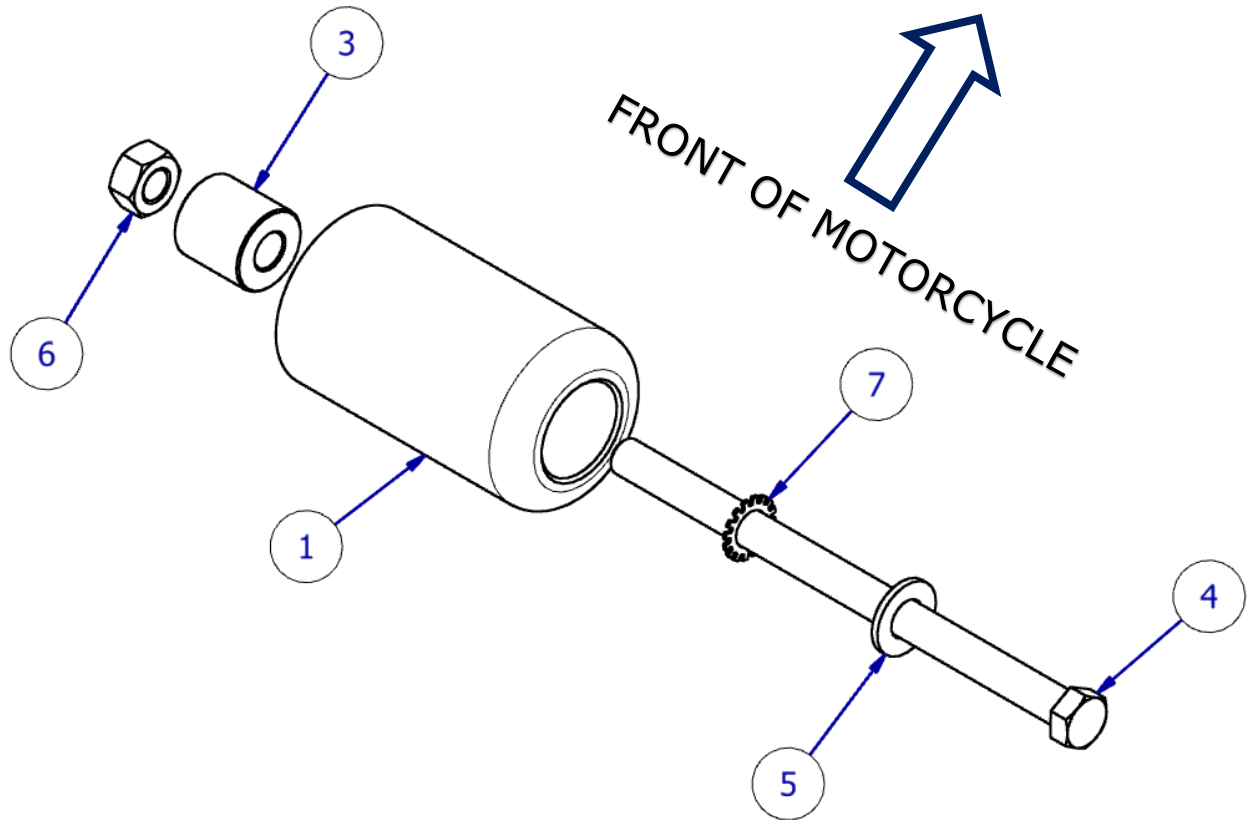


**ASSEMBLY DIAGRAM 1 - LEFT HAND SIDE**

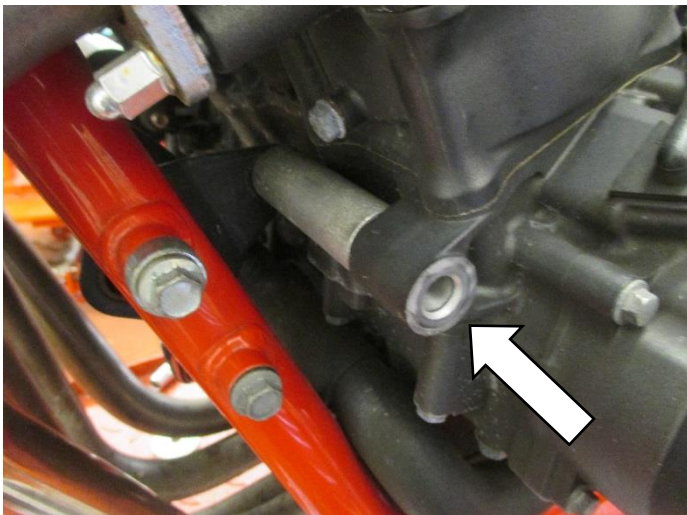
R&G

Unit 1, Shelley's Lane, East Worldham, Alton, Hampshire, GU34 3AQ

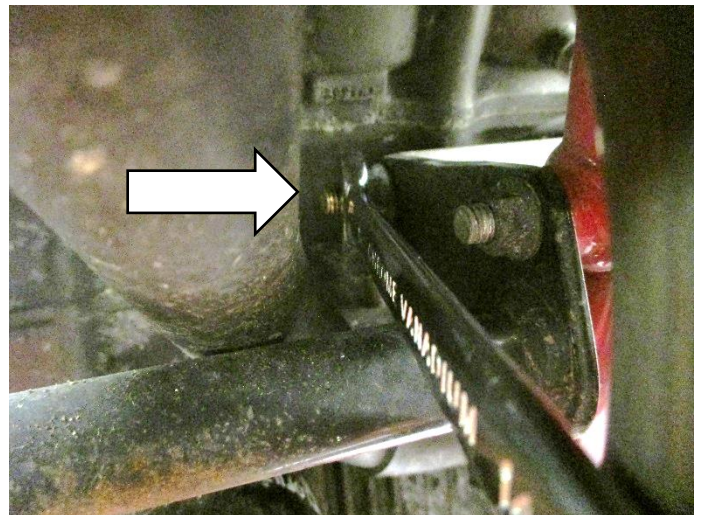
Tel: +44 (0)1420 89007 Fax: +44 (0)1420 87301 [www.rg-racing.com](http://www.rg-racing.com) Email: [info@rg-racing.com](mailto:info@rg-racing.com)



**ASSEMBLY DIAGRAM 2 – RIGHT HAND SIDE**



**PICTURE 1**

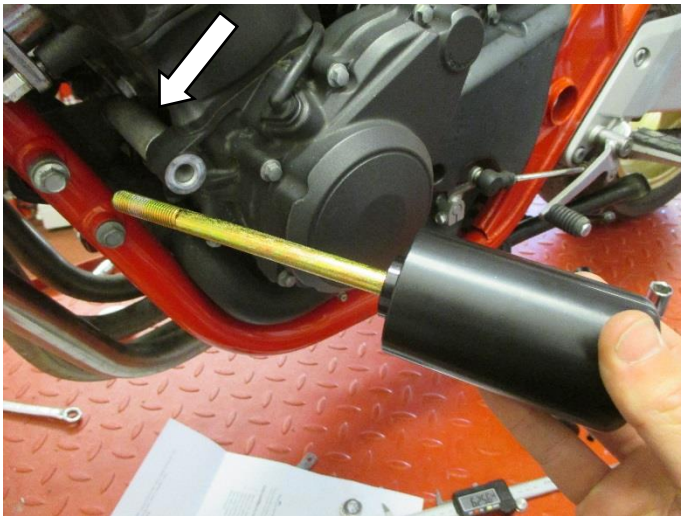


**PICTURE 2**

R&G

Unit 1, Shelley's Lane, East Worldham, Alton, Hampshire, GU34 3AQ

Tel: +44 (0)1420 89007 Fax: +44 (0)1420 87301 [www.rg-racing.com](http://www.rg-racing.com) Email: [info@rg-racing.com](mailto:info@rg-racing.com)



PICTURE 3



PICTURE 4

## FITTING INSTRUCTIONS

### Left Hand Side (as you sit on the bike)

- **Before fitting the R&G crash protectors, it is advised that a scissor jack is positioned underneath the bike at a suitable mounting point to support the weight of the engine during fitment. A small piece of wood should also be placed between the jack and the mounting point to help to spread the load. Do not remove more than one engine bolt at any time during the fitting to prevent the engine moving.**
- Remove the engine bolt on the left-hand side of the bike arrowed in **picture 1**. You will need to hold the rear nut on the back of the engine bolt with a 14mm spanner as shown in **picture 2** whilst unwinding the bolt.
- Ensure that the OEM spacer, arrowed in **picture 3**, between engine and frame mounting bracket stays in position during bolt removal.
- Assemble the LHS crash protector as shown in **Assembly Diagram 1** by sliding one M10 washer (item 5) followed by shake-proof washer (item 7) over the end of either M10 x 1.25 x 180mm bolt (item 4).
- Next slide one B0005 Crash Protector (item 1) over the bolt assembly followed by the smaller S0727 spacer (item 2). Your assembly should now resemble that in **picture 3**.
- Insert the assembly in place of the original engine bolt through the engine mount hole, OEM spacer and frame bracket so that the threads protrude through the frame bracket as in **picture 4**.
- Fix one M10 Nyloc nut (item 6) onto the exposed threads in place of the OEM nut using your 14mm spanner and 17mm to tighten the nut and bolt assembly to the recommended torque setting. Ensure that the threads of the bolt protrude through the plastic nut completely and the bobbin cannot spin.

R&G

Unit 1, Shelley's Lane, East Worldham, Alton, Hampshire, GU34 3AQ

Tel: +44 (0)1420 89007 Fax: +44 (0)1420 87301 [www.rg-racing.com](http://www.rg-racing.com) Email: [info@rg-racing.com](mailto:info@rg-racing.com)

**Right Hand Side (as you sit on the bike)**

- Moving to the right-hand side of the bike, repeat the previous steps, assembling the crash protector using the longer S0326 spacer (item 3) referring to **Assembly Diagram 2**
- Check both sides are secure, and the crash protectors cannot rotate freely before riding.
- Check tightness of each side regularly.

ISSUE 1 09/08/2019 (DM)

**CONSUMER NOTICE**

The catalogue description and any exhibition of samples are only broad indications of the Products and R&G may make design changes which do not diminish their performance or visual appeal and supplying them in such state shall conform to the order. The Buyer acknowledges no representation or warranty (other than as to title) has been given or will apply to the Products other than those in R&G's order or confirmation and the Buyer confirms it has chosen the Products as being of merchantable quality and suitable for its particular purposes. Where R&G fits the Products or undertakes other services it shall exercise reasonable skill and care and rectify any fault free of charge unless the workmanship has been disturbed. The Buyer is responsible for ensuring that the warranty on the motorcycle is not affected by the fitting of the Products. On return of any defective Products R&G shall at its option either supply a replacement or refund the purchase money but shall not be liable if the Products have been modified or used or maintained otherwise than in accordance with R&G's or manufacturer's instructions and good engineering practice or if the defect arises from accident or neglect. Other than identified above and subject to R&G not limiting its liability for causing death and personal injury, it shall not be liable for indirect or consequential loss and otherwise its liability shall be limited to the amounts paid by the Buyer for the Products or the fitting or service concerned. These terms do not affect the Buyer's statutory rights.

**R&G RACING RETURNS POLICY (NON-FAULTY GOODS)**

Returns must be pre-authorized (if not pre-authorized the return will be rejected). Goods may only be returned direct to us if they were purchased direct from us (customer must prove if necessary). Otherwise to be returned to original vendor. Goods must be in re-sellable condition, in the opinion of R&G Racing. All returns are subject to a 25% restocking and handling fee (25% of the gross value exc. P&P – at the prevailing price at time of purchase). The customer must pay any and all carriage charges. No returns of discontinued products, unless within 14 days of purchase. This policy does not affect your statutory rights and does not refer to faulty goods.

R&amp;G

Unit 1, Shelley's Lane, East Worldham, Alton, Hampshire, GU34 3AQ

Tel: +44 (0)1420 89007 Fax: +44 (0)1420 87301 [www.rg-racing.com](http://www.rg-racing.com) Email: [info@rg-racing.com](mailto:info@rg-racing.com)