



FITTING INSTRUCTIONS FOR AB0037 ADVENTURE BARS
HONDA CB125R-CB300R 2018



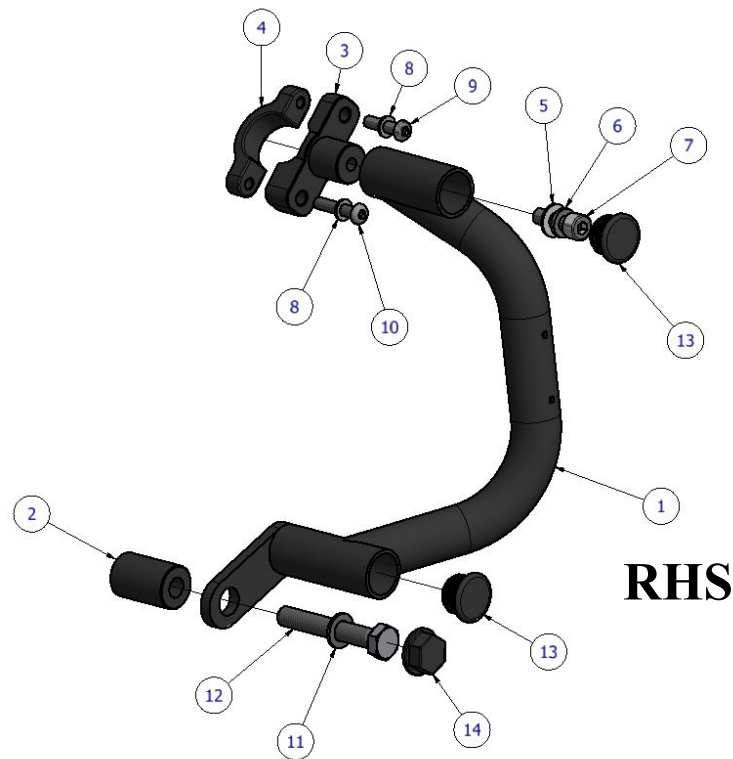
THIS KIT CONTAINS THE ITEMS PICTURED AND LABELLED BELOW.
DO NOT PROCEED UNTIL YOU ARE SURE ALL PARTS ARE PRESENT.

Please note that the way the kit is packed does not necessarily represent the way of mounting to the bike.

THE PARTS SHOWN MAY BE REPRESENTATIVE ONLY (FOR CLARITY OF INSTRUCTIONS ONLY).

Please note that in cases where kits are packed with rubber washers holding the components onto the bolt – *the rubber washers should be thrown away!*

Digital copies of these instructions are available to download from www.rg-racing.com



LEGEND

- ITEM 1 = RHS ADVENTURE BAR (CB070) (x1) {SHOWN ABOVE}– LHS ADVENTURE BAR (CB069) (x1)
 ITEM 2 = SPACER (S1158) (x2)
 ITEM 3 = LARGE FRAME CLAMP (F0048) (x2)
 ITEM 4 = SMALL FRAME CLAMP (F0049) (x2)
 ITEM 5 = M8 WASHER (x2)
 ITEM 6 = M8 SPRING WASHER (x2)
 ITEM 7 = M8 x 1.25 x 25mm LONG CAP HEAD BOLT (x2)
 ITEM 8 = M6 WASHER (x4)
 ITEM 9 = M6 x 1mm x 25mm LONG BUTTON HEAD BOLT (x2)
 ITEM 10 = M6 x 1mm x 30mm LONG BUTTON HEAD BOLT (x2)
 ITEM 11 = M10 WASHER (x2)
 ITEM 12 = M10 x 1.25mm x 65mm LONG HEX HEAD BOLT (x2)
 ITEM 13 = TUBE PLUG (FI0149) (x4)
 ITEM 14 = M10 RUBBER HEX HEAD CAPS (NC0001) (x2)

R&G

Unit 1, Shelley's Lane, East Worldham, Alton, Hampshire, GU34 3AQ
 Tel: +44 (0)1420 89007 Fax: +44 (0)1420 87301 www.rg-racing.com Email: info@rg-racing.com



TOOLS REQUIRED

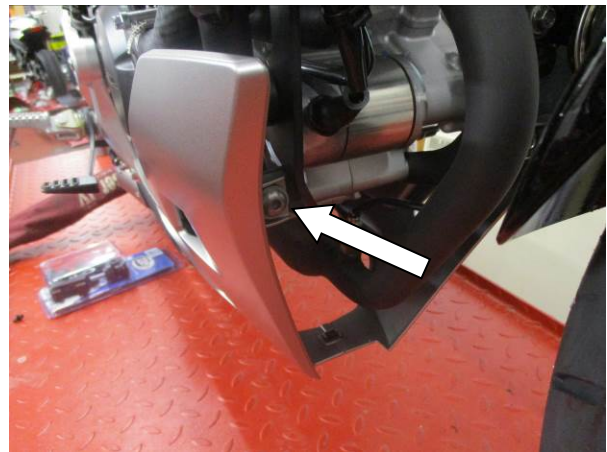
- Set of metric Allen keys.
- 17mm Socket and wrench.

MAXIMUM TORQUE SETTINGS

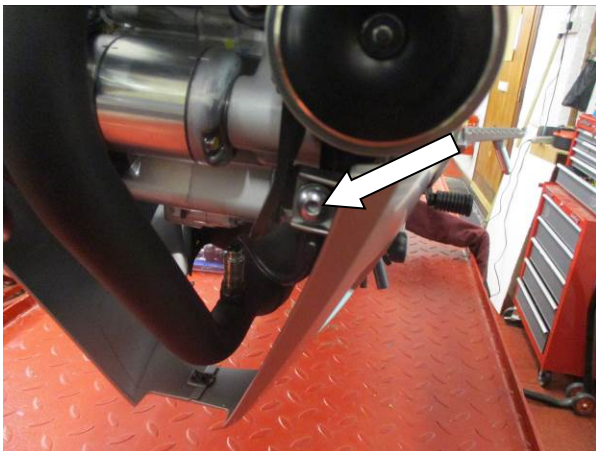
- M4 BOLT = 8Nm
- M5 BOLT = 12Nm
- M6 BOLT = 15Nm
- M8 BOLT = 20Nm
- M10 BOLT = 40Nm



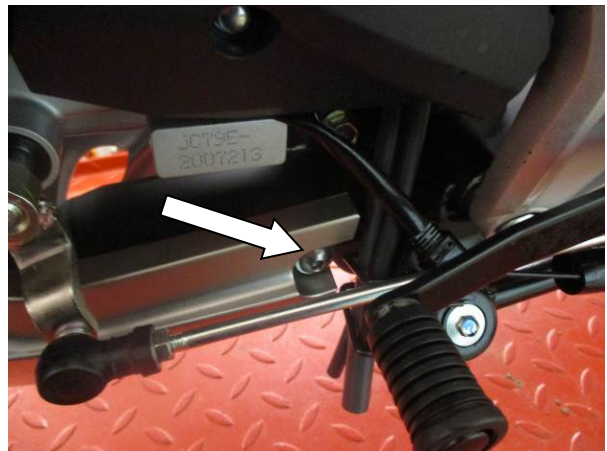
Picture 1



Picture 2



Picture 3



Picture 4



Picture 5



Picture 6



Picture 7



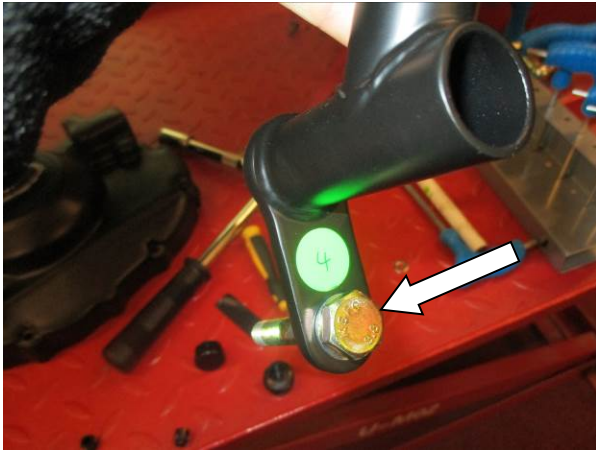
Picture 8



Picture 9



Picture 10



Picture 11



Picture 12



Picture 13

FITTING INSTRUCTIONS

- While supporting the belly pan remove the four bolts arrowed in Picture 1 to Picture 4, and carefully remove the belly pan.
- Gently position the small clamp (ITEM 4) as shown in Picture 5 and Picture 6, with the larger offset at the bottom (Shown in Picture 5).
- Slide one M6 washer (ITEM 8) over the 25mm M6 Bolt (ITEM 9) and insert the bolt and washer into the thinner end of the Large frame clamp (ITEM 3).
- Slide one M6 washer (ITEM 8) over the 30mm M6 Bolt (ITEM 10) and insert the bolt and washer into the thicker end of the Large frame clamp (ITEM 3).
- Offer the assembly up to the smaller clamp, and evenly tighten the two bolts to secure it in place. NOTE: DO NOT FULLY TIGHTEN.
- Remove the engine mount bolt shown in Picture 9.
- Insert the spacer (ITEM 2) into the recess.

R&G

Unit 1, Shelley's Lane, East Worldham, Alton, Hampshire, GU34 3AQ
 Tel: +44 (0)1420 89007 Fax: +44 (0)1420 87301 www.rg-racing.com Email: info@rg-racing.com



- Slide the M10 washer (ITEM 11) over the M10 x 65mm bolt (ITEM 12) and insert the bolt into the lower mount of the RHS Adventure bar (ITEM 1) (shown in Picture 11).
- Slide an M8 Spring washer (ITEM 6), and M8 Washer (ITEM 5) over the M8 x 25mm bolt (ITEM 7).
- Insert the bolt into the cupped spacer on the RHS Adventure bar (ITEM 1) (shown in Picture 12).
- Offer the assembly up to the two mounts, and evenly torque all the bolts up.
- Insert two tube plugs (ITEM 13) into the recesses shown in Picture 13.
- Fit the hex head cap (ITEM 14) over the M10 bolt head.
- Repeat the above steps for the LHS adventure bar.
- With both sets of adventure bars fitted, refit the belly pan.

ISSUE 1 28/01/2019 (LF)

CONSUMER NOTICE

The catalogue description and any exhibition of samples are only broad indications of the Products and R&G may make design changes which do not diminish their performance or visual appeal and supplying them in such state shall conform to the order. The Buyer acknowledges no representation or warranty (other than as to title) has been given or will apply to the Products other than those in R&G's order or confirmation and the Buyer confirms it has chosen the Products as being of merchantable quality and suitable for its particular purposes. Where R&G fits the Products or undertakes other services it shall exercise reasonable skill and care and rectify any fault free of charge unless the workmanship has been disturbed. The Buyer is responsible for ensuring that the warranty on the motorcycle is not affected by the fitting of the Products. On return of any defective Products R&G shall at its option either supply a replacement or refund the purchase money but shall not be liable if the Products have been modified or used or maintained otherwise than in accordance with R&G's or manufacturer's instructions and good engineering practice or if the defect arises from accident or neglect. Other than identified above and subject to R&G not limiting its liability for causing death and personal injury, it shall not be liable for indirect or consequential loss and otherwise its liability shall be limited to the amounts paid by the Buyer for the Products or the fitting or service concerned. These terms do not affect the Buyer's statutory rights.

R&G RETURNS POLICY (NON-FAULTY GOODS)

Returns must be pre-authorised (if not pre-authorised the return will be rejected). Goods may only be returned direct to us if they were purchased direct from us (customer must prove if necessary). Otherwise to be returned to original vendor. Goods must be in re-sellable condition, in the opinion of R&G. All returns are subject to a 25% restocking and handling fee (25% of the gross value exc. P&P – at the prevailing price at time of purchase). The customer must pay any and all carriage charges. No returns of discontinued products, unless within 14 days of purchase. This policy does not affect your statutory rights and does not refer to faulty goods.

R&G

Unit 1, Shelley's Lane, East Worldham, Alton, Hampshire, GU34 3AQ

Tel: +44 (0)1420 89007 Fax: +44 (0)1420 87301 www.rg-racing.com Email: info@rg-racing.com